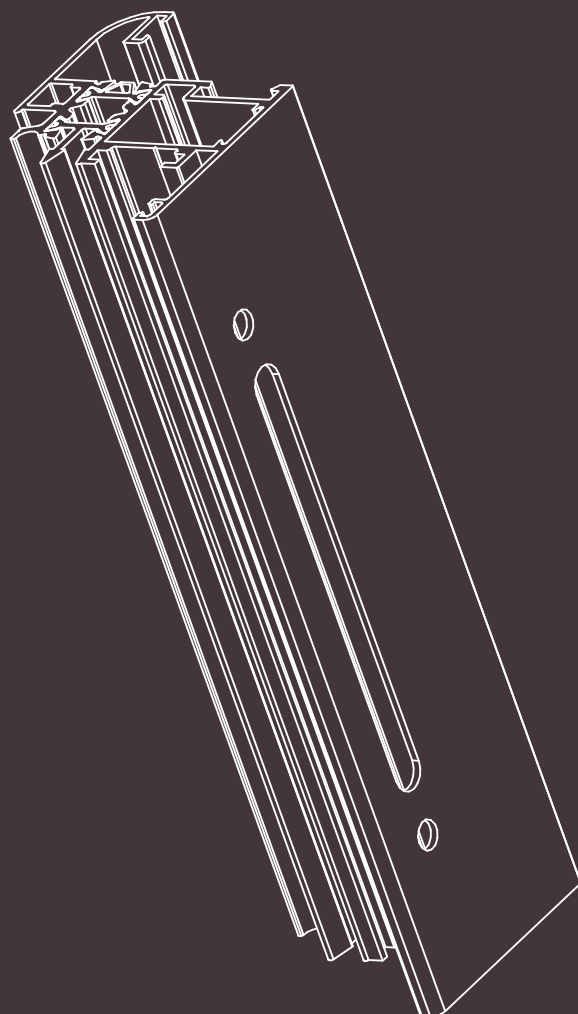


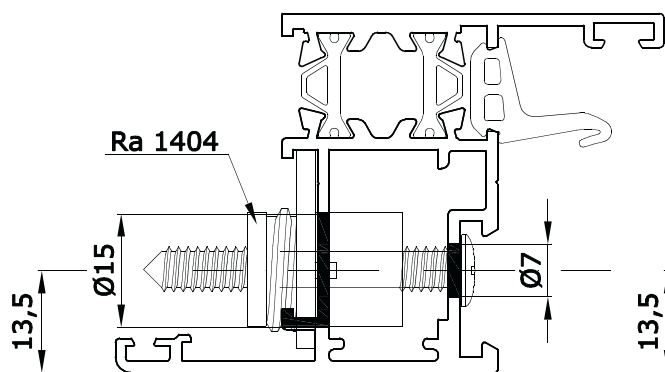
atlantis
serie 55TT



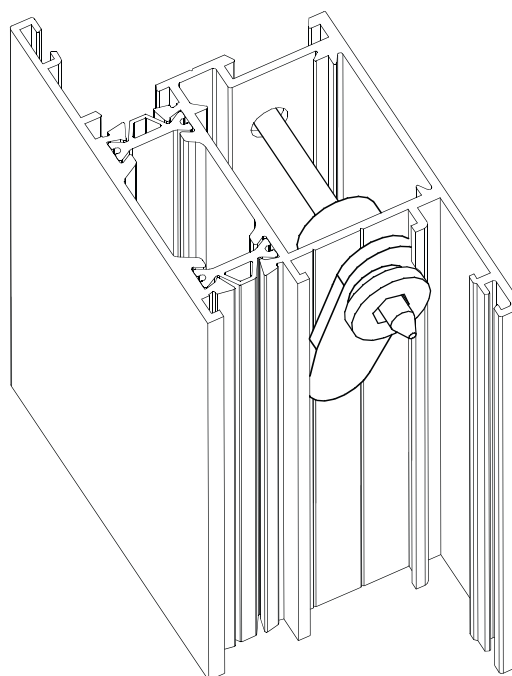
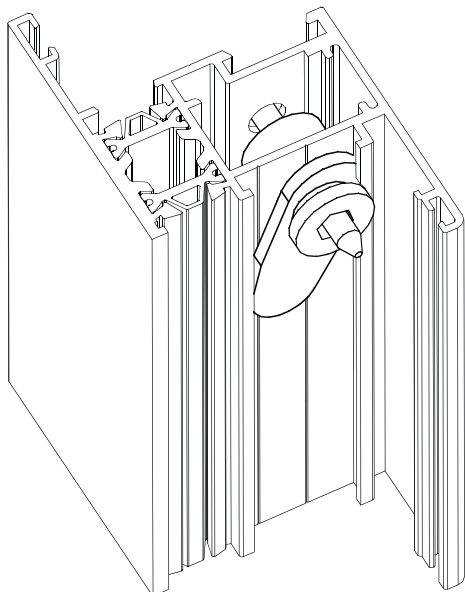
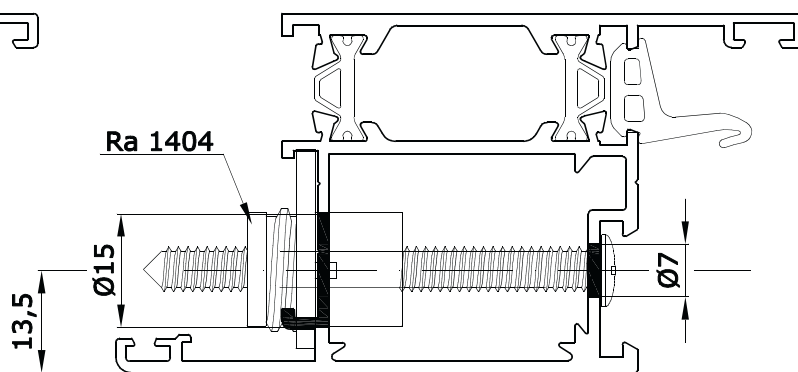
TO.MA. S.p.a.
ESTRUSIONE ALLUMINIO

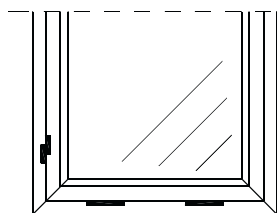
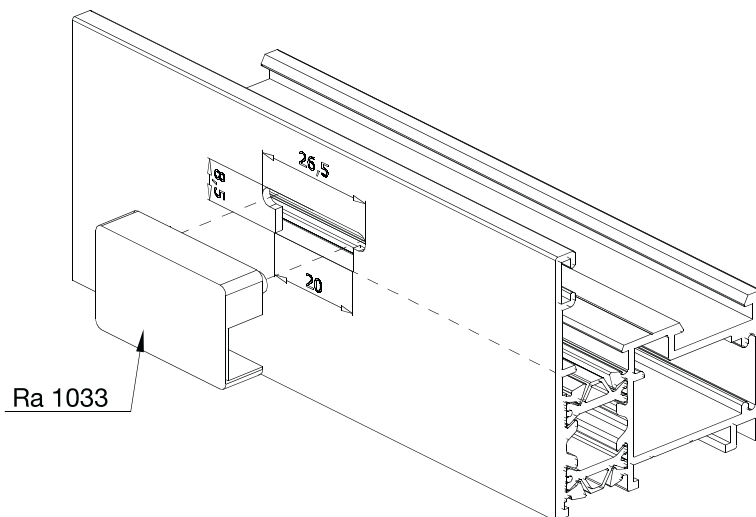


AZ 5202

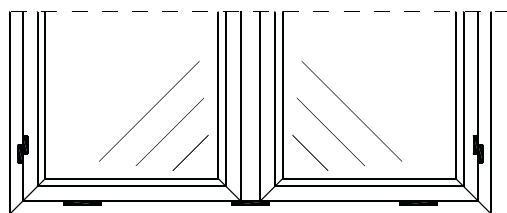


AZ 5207

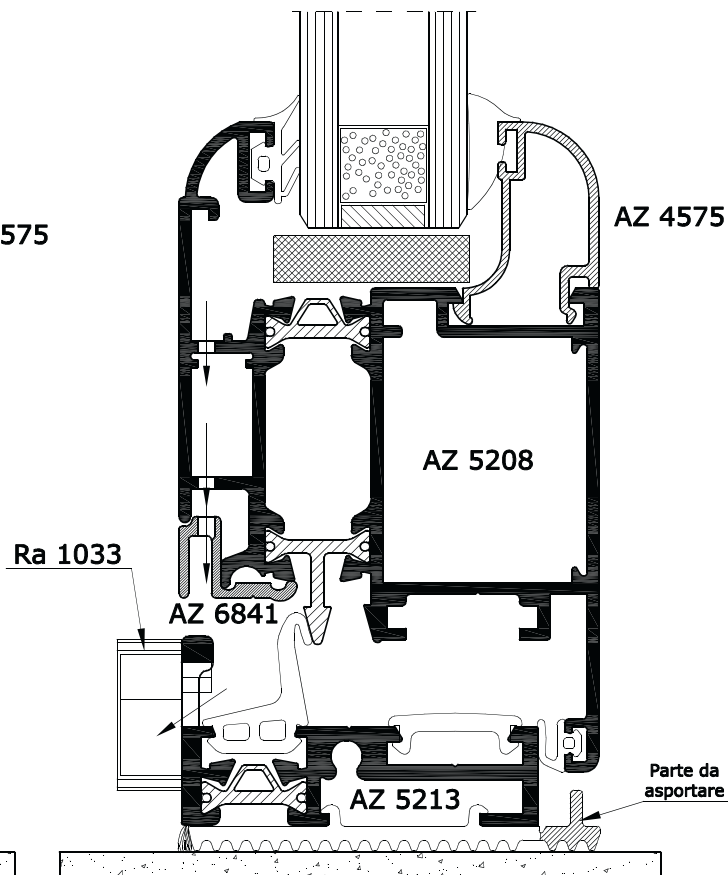
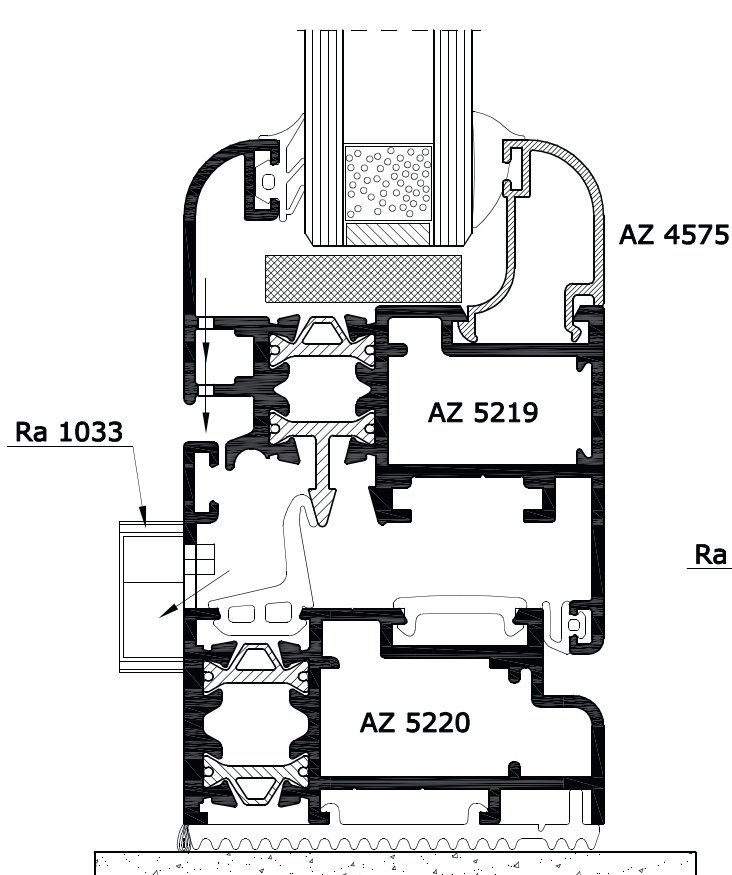


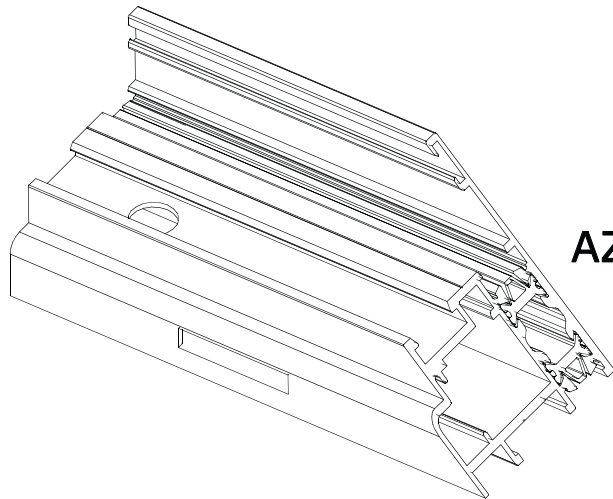
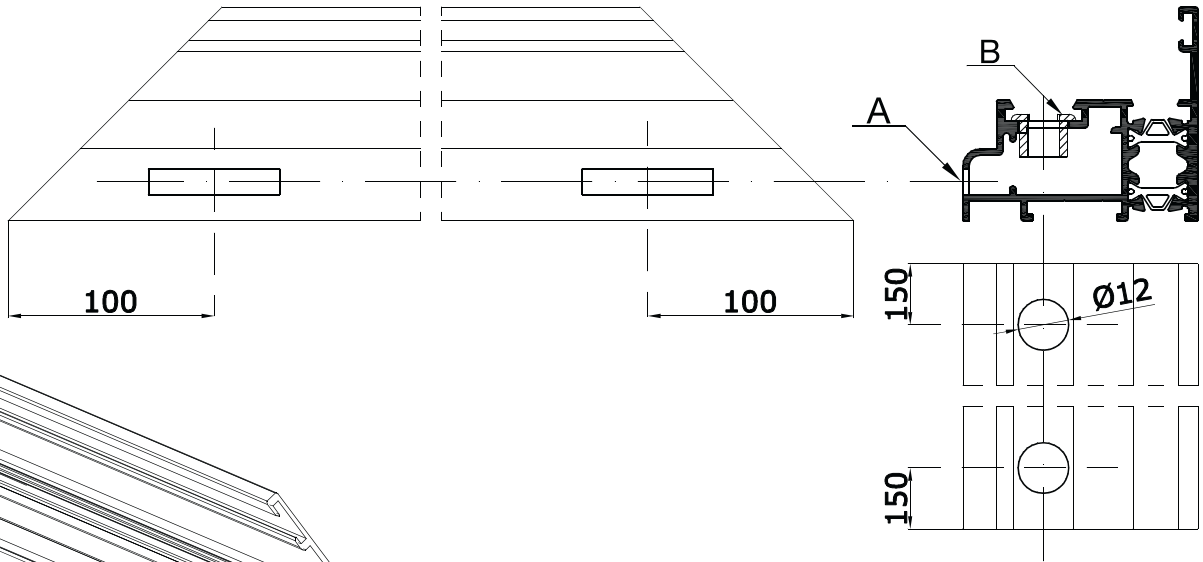


Per telai ad 1 anta
minimo 2 asole



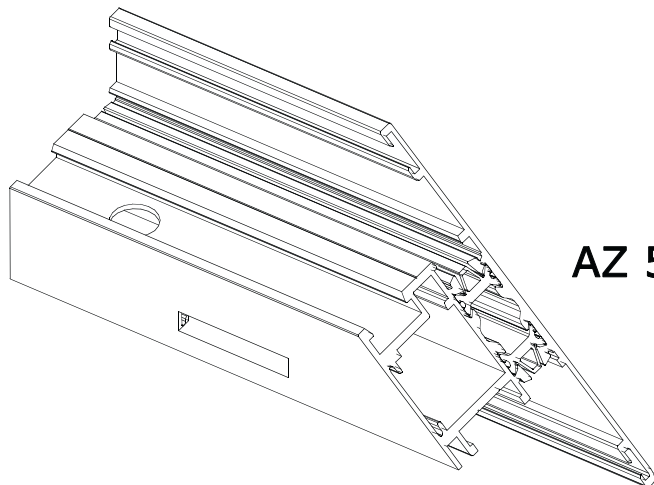
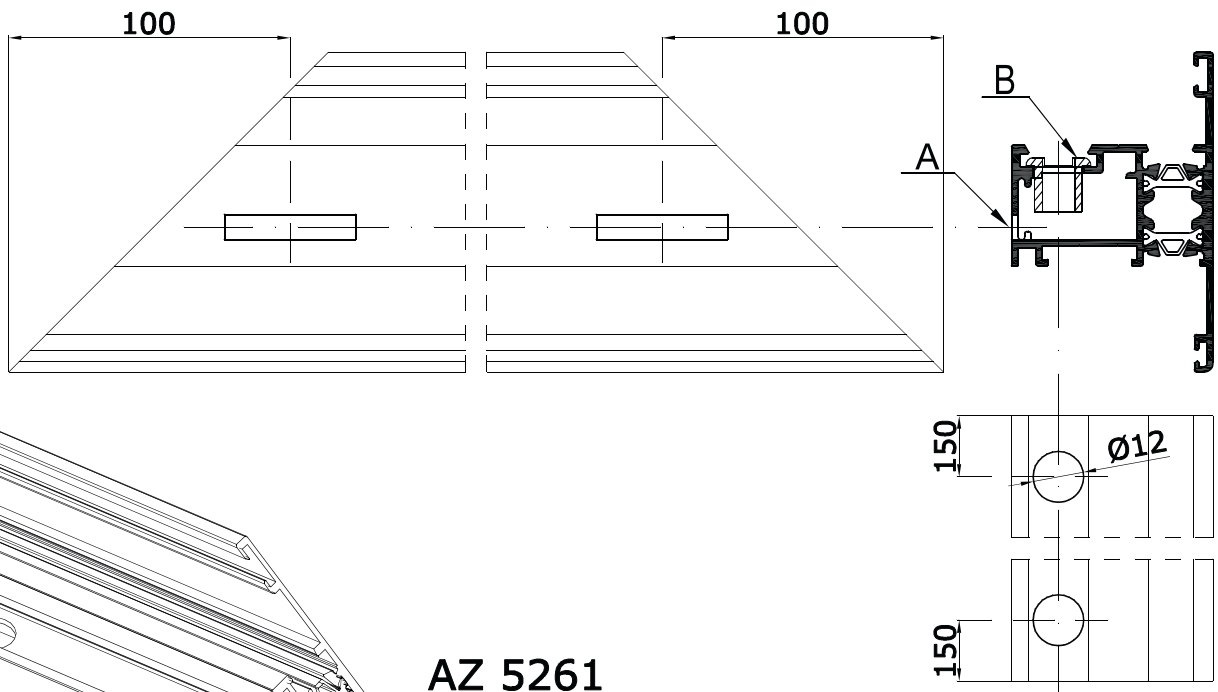
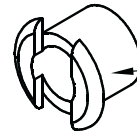
Per telai a 2 ante
minimo 3 asole



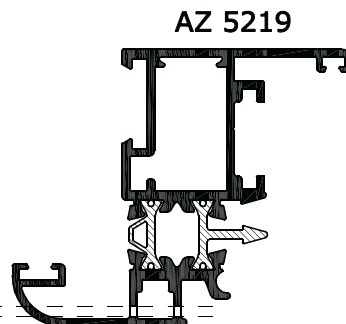
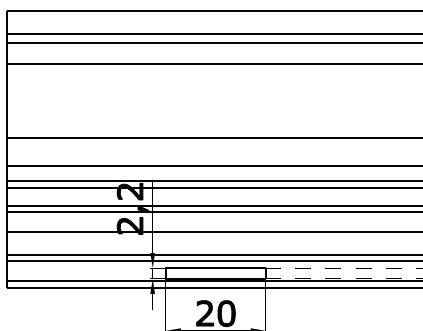
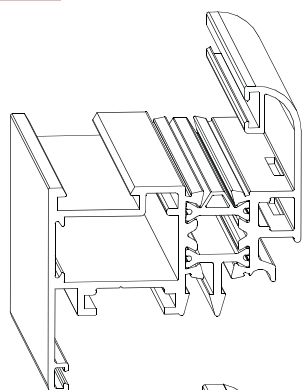


AZ 5220

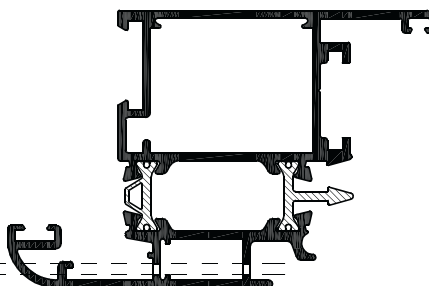
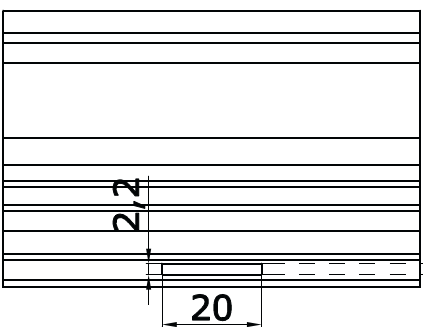
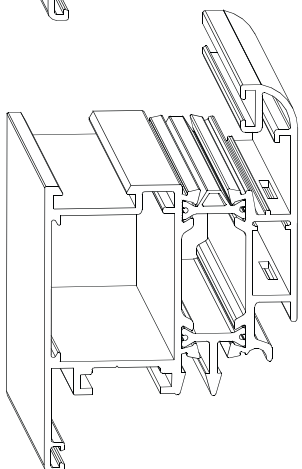
- Ⓐ Asola 31x6 n°2
- Ⓑ Foro Ø12 n°2 per inserimento boccola Ra 2601



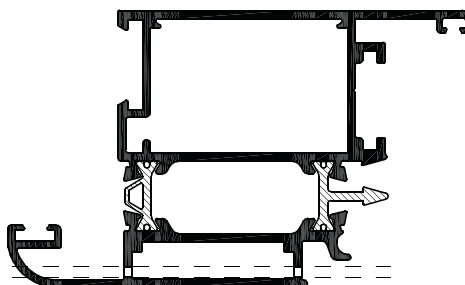
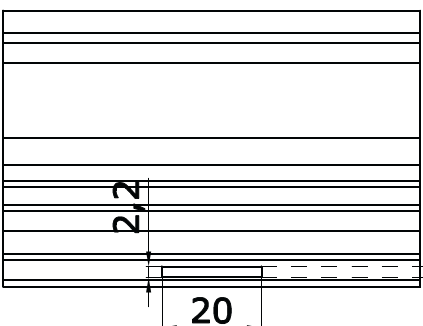
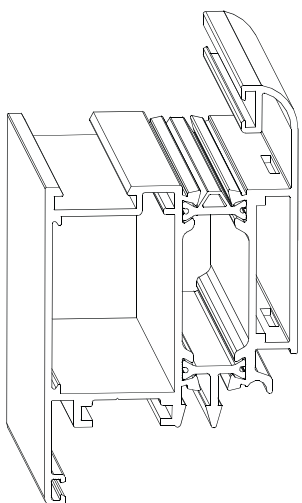
AZ 5261



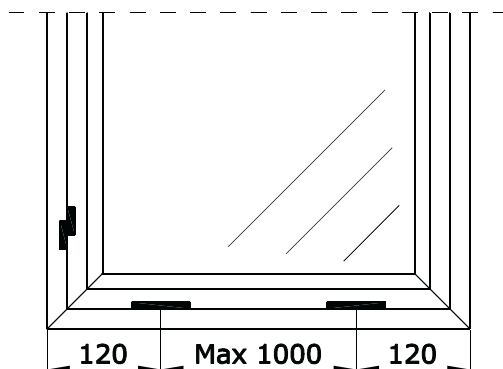
AZ 5219



AZ 5225

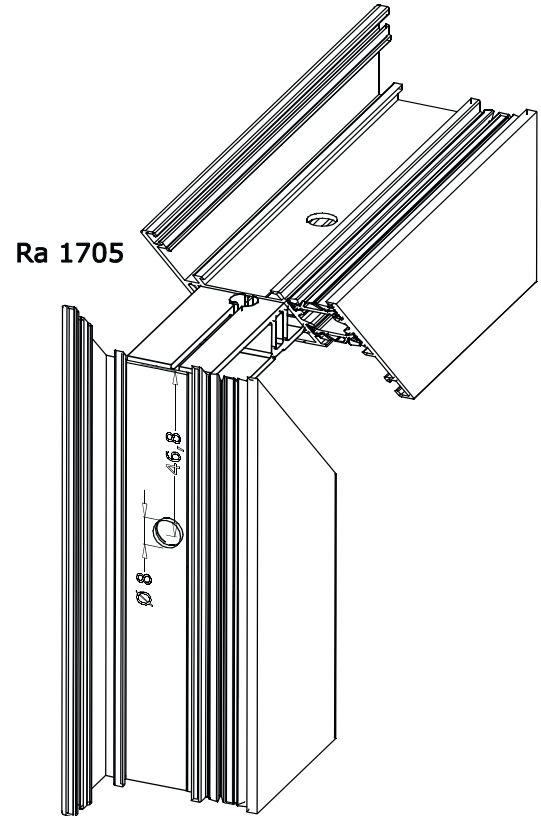
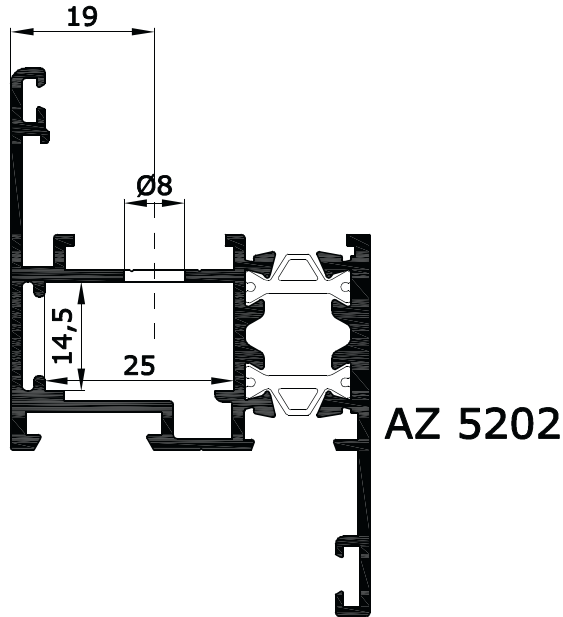


AZ 5247



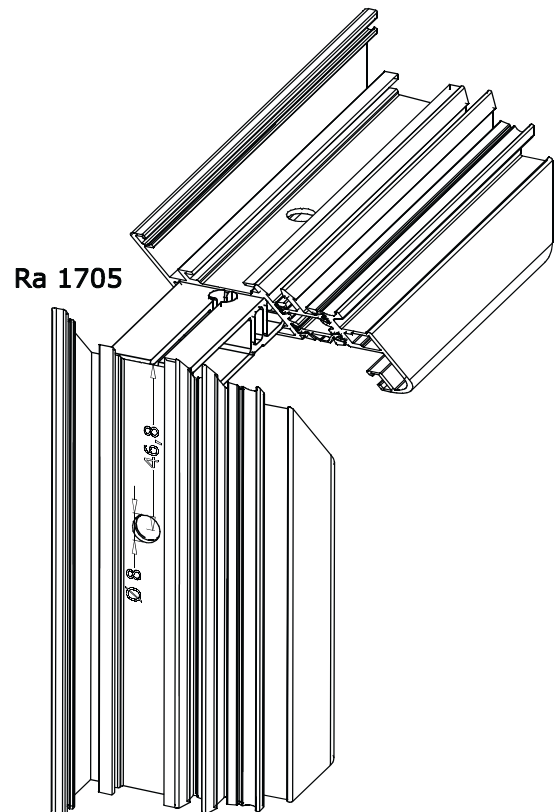
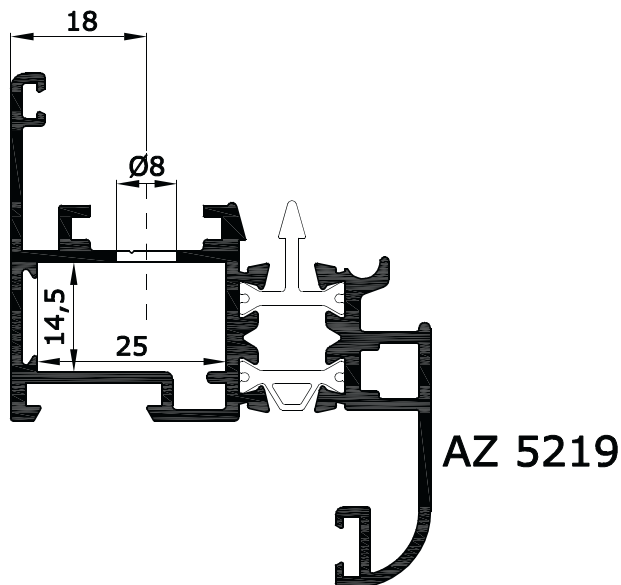
N.B. - Lavorazione eseguita con punzonatrice Ra 1074

Squadretta a spinare
Ra 1705



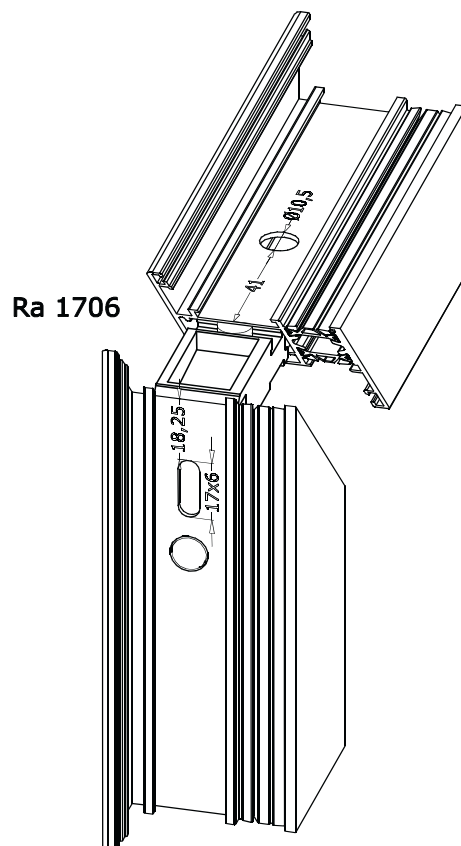
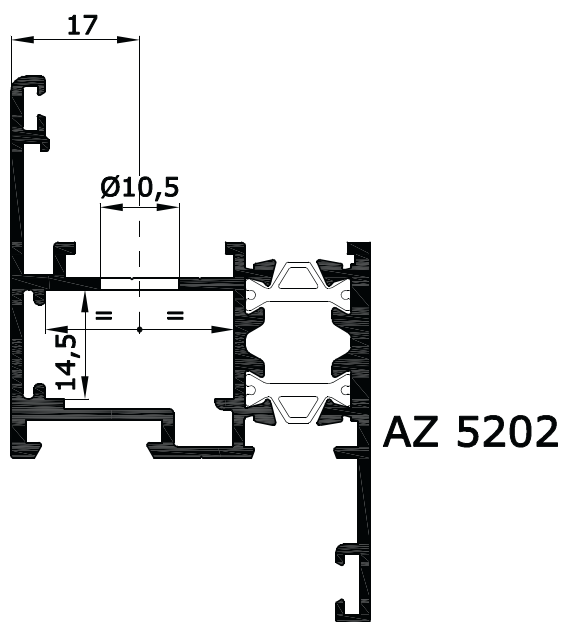
N.B. - Per l'unione degli angoli si consiglia l'utilizzo del collante
- Lavorazione eseguita con punzonatrice Ra 1074

Squadretta a spinare
Ra 1705



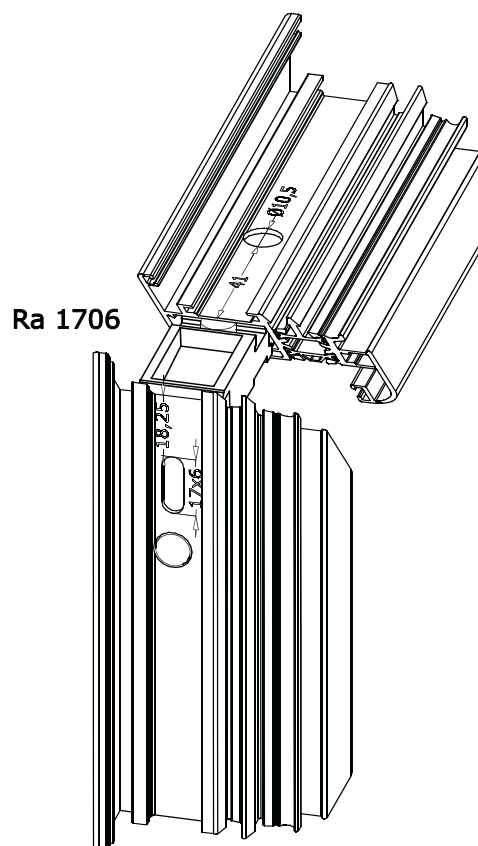
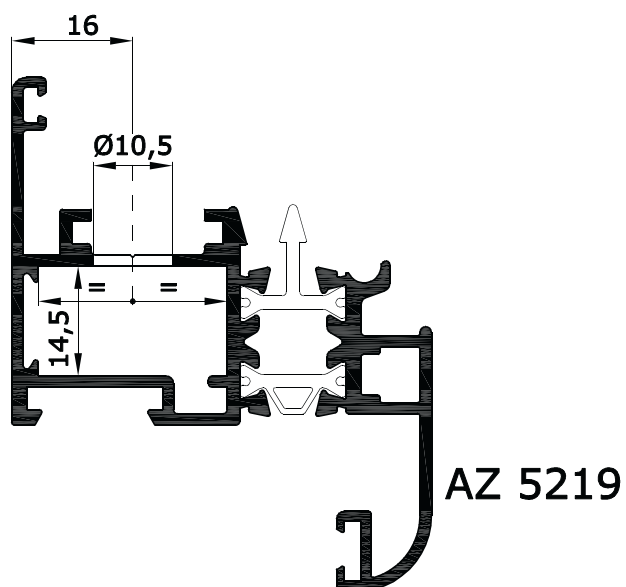
N.B. - Per l'unione degli angoli si consiglia l'utilizzo del collante
- Lavorazione eseguita con punzonatrice Ra 1074

Squadretta a tiraggio meccanico Ra 1706



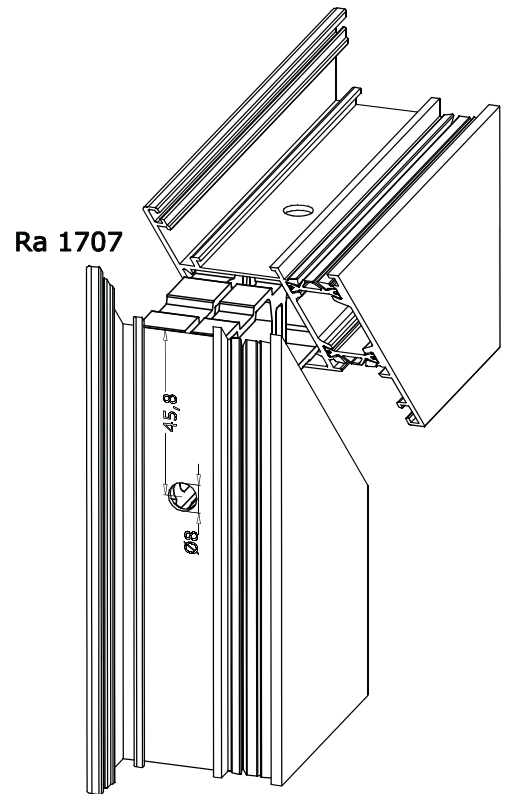
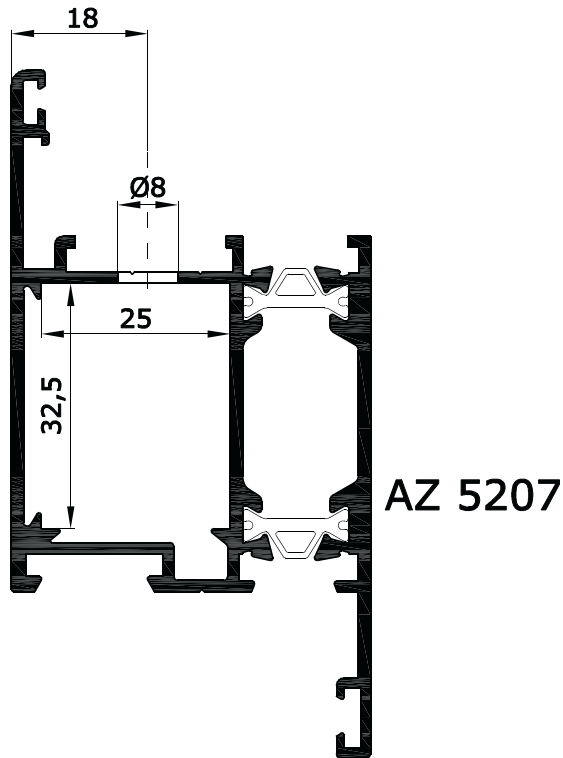
N.B. - Per l'unione degli angoli si consiglia l'utilizzo del collante
- Lavorazione eseguita con punzonatrice Ra 1074

Squadretta a tiraggio meccanico Ra 1706



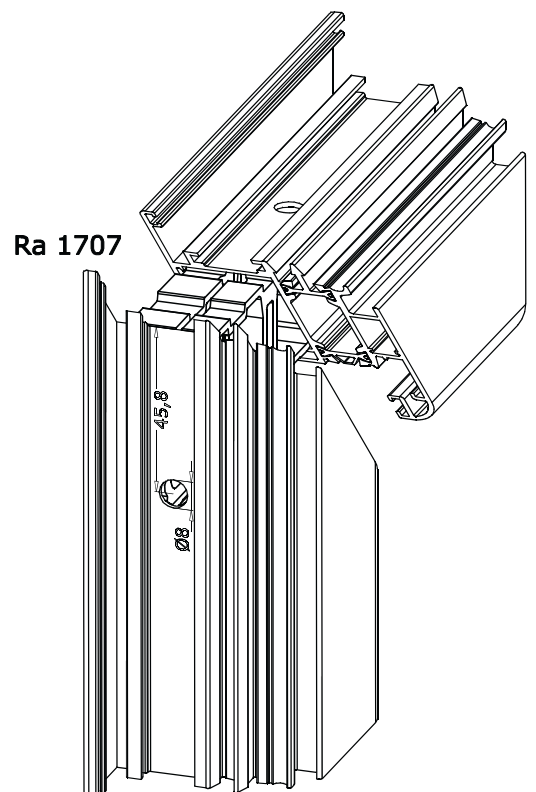
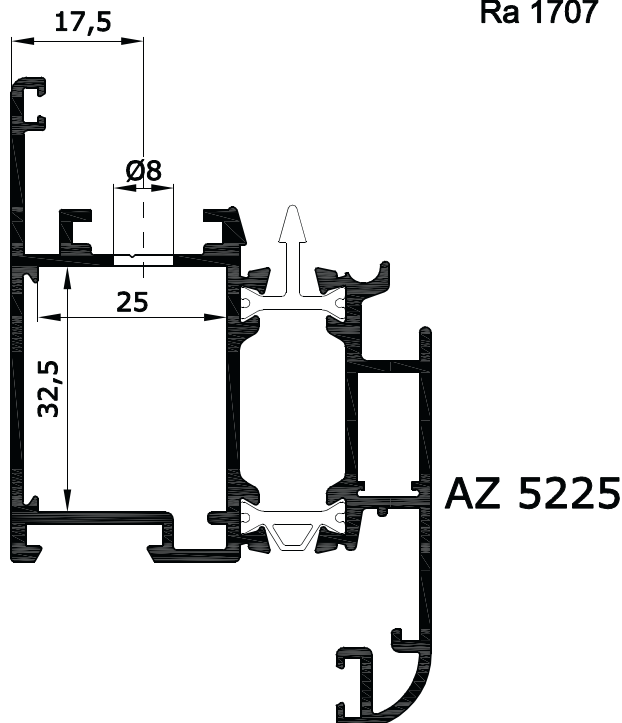
N.B. - Per l'unione degli angoli si consiglia l'utilizzo del collante
- Lavorazione eseguita con punzonatrice Ra 1074

Squadretta a spinare
Ra 1707



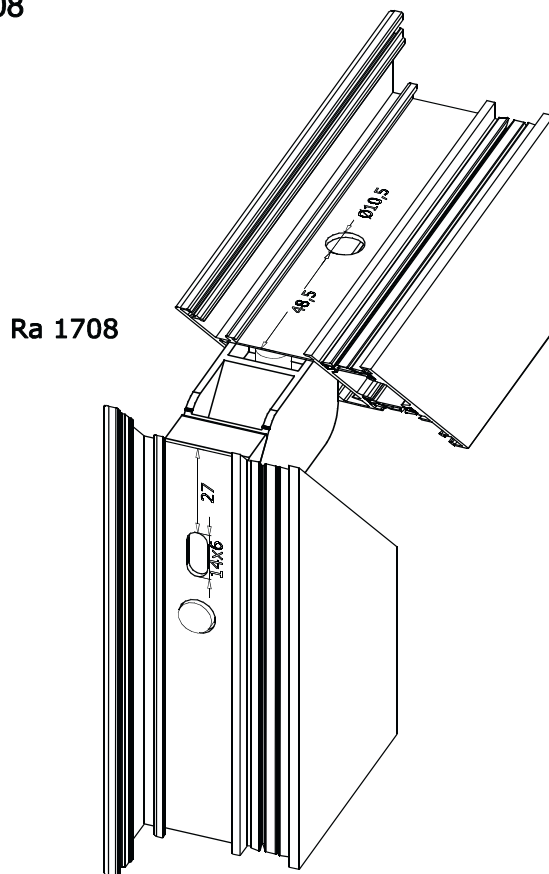
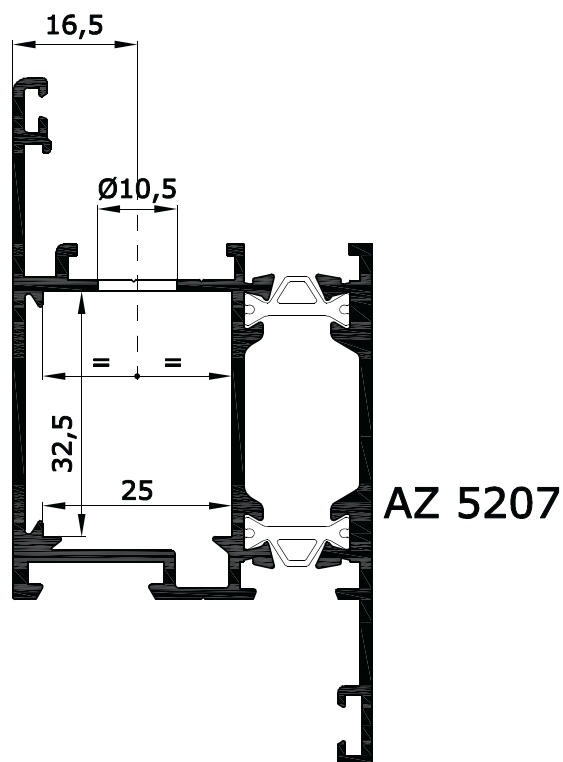
N.B. - Per l'unione degli angoli si consiglia l'utilizzo del collante
- Lavorazione eseguita con punzonatrice Ra 1074

Squadretta a spinare
Ra 1707



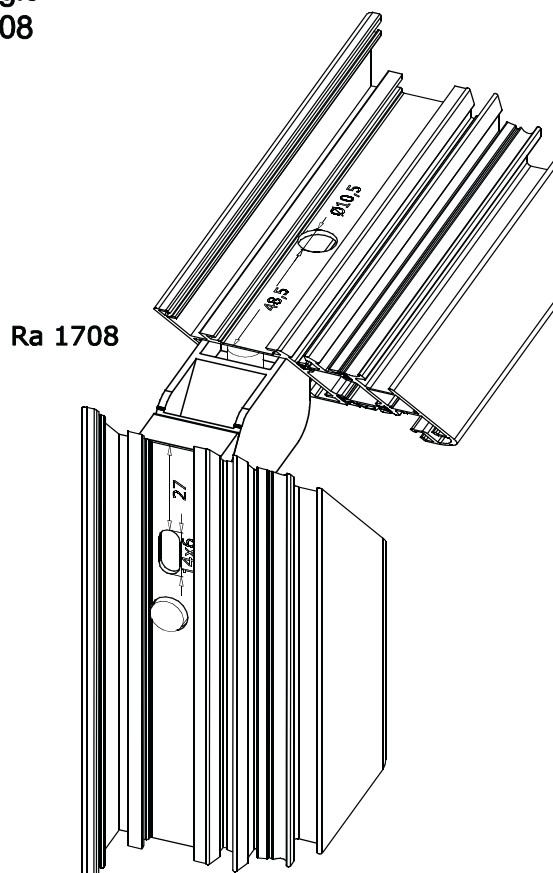
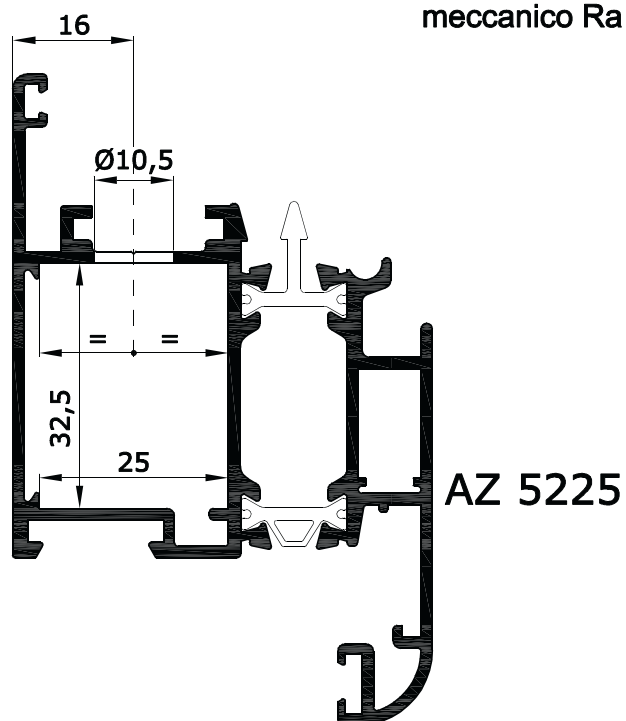
N.B. - Per l'unione degli angoli si consiglia l'utilizzo del collante
- Lavorazione eseguita con punzonatrice Ra 1074

Squadretta a tiraggio meccanico Ra 1708



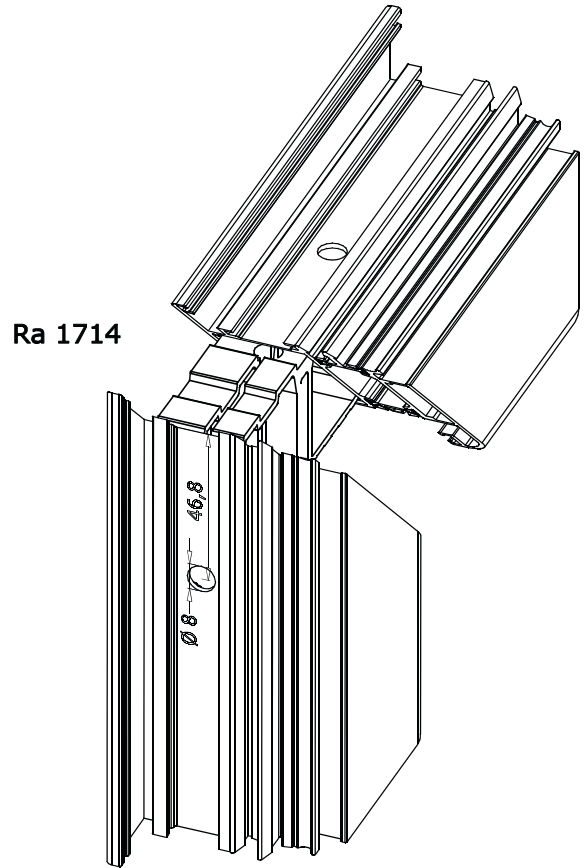
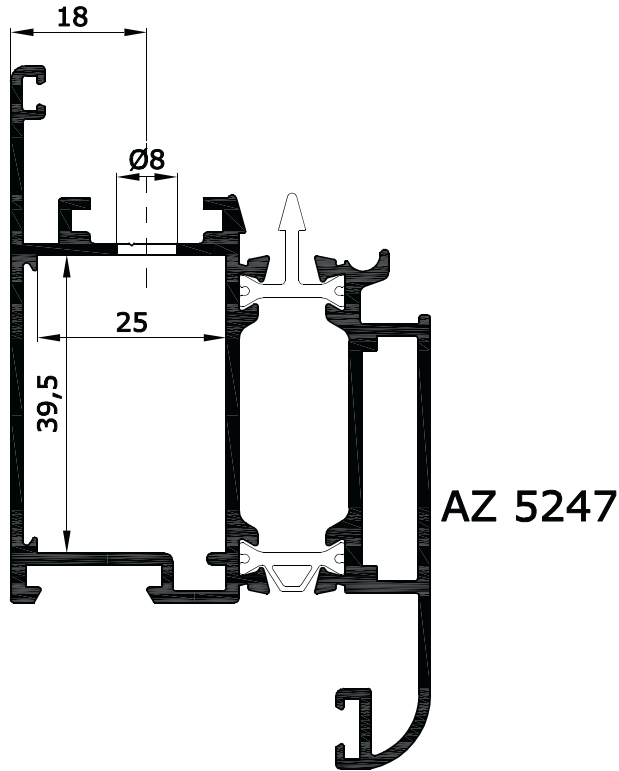
N.B. - Per l'unione degli angoli si consiglia l'utilizzo del collante
- Lavorazione eseguita con punzonatrice Ra 1074

Squadretta a tiraggio meccanico Ra 1708



N.B. - Per l'unione degli angoli si consiglia l'utilizzo del collante
- Lavorazione eseguita con punzonatrice Ra 1074

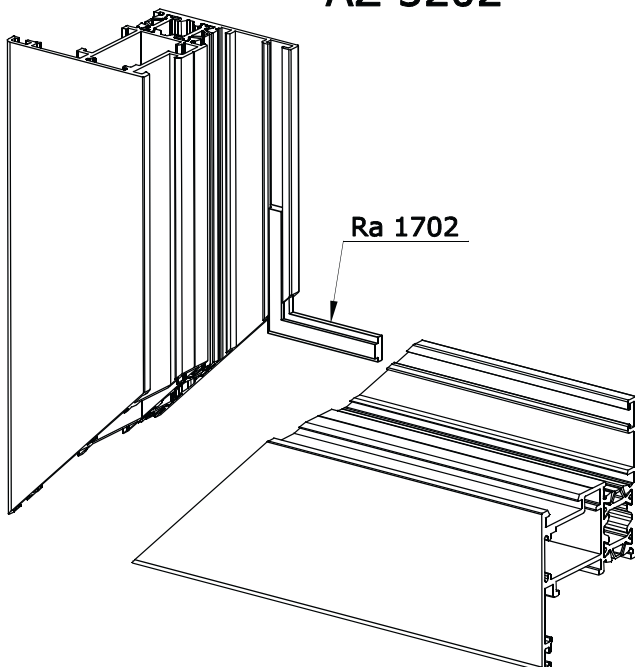
Squadretta a spinare
Ra 1714



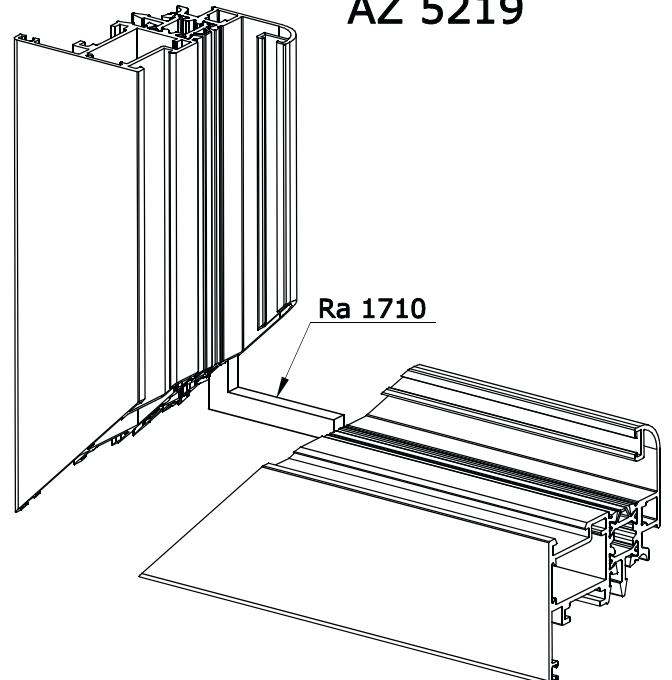
N.B. - Per l'unione degli angoli si consiglia l'utilizzo del collante
- Lavorazione eseguita con punzonatrice Ra 1074

Squadrette di allineamento e tenuta

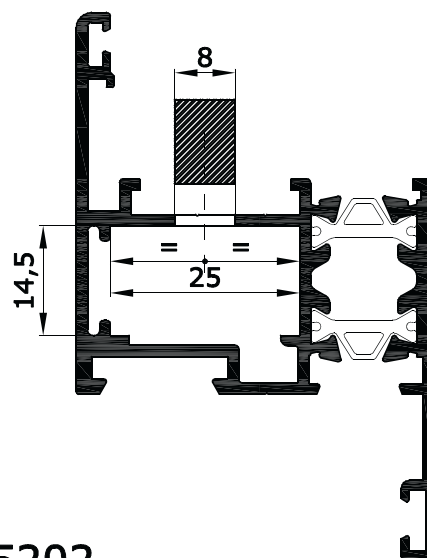
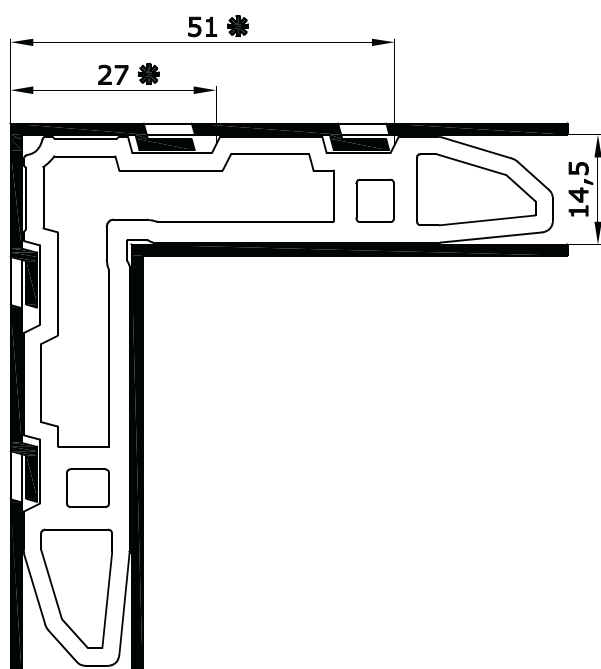
AZ 5202



AZ 5219



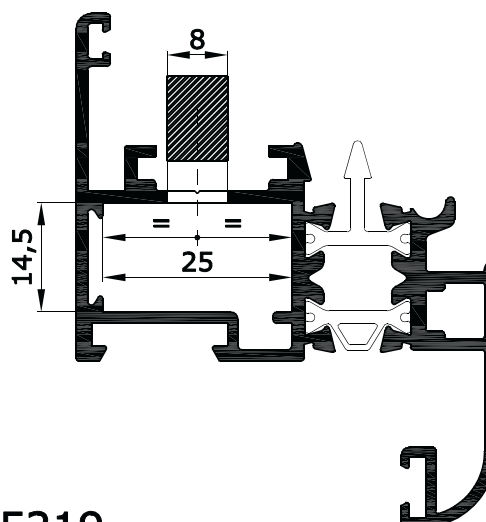
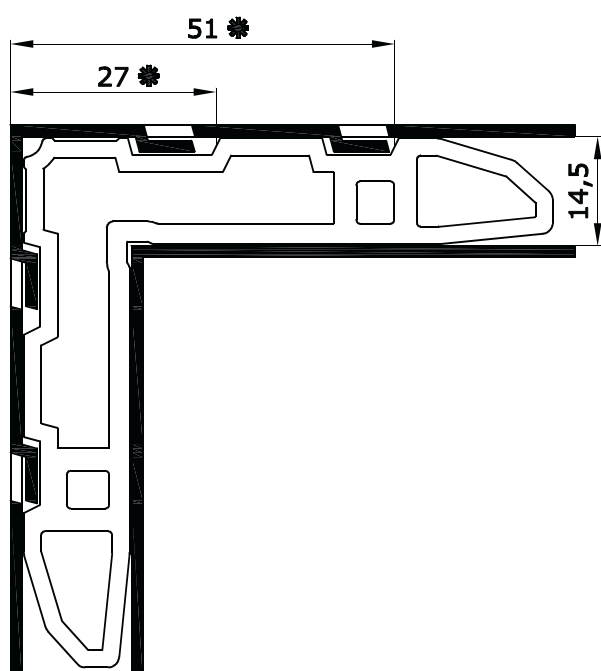
Squadretta a cianfrinare
Ra 1711



AZ 5202

N.B. - Per l'unione degli angoli si consiglia l'utilizzo del collante
- Quota teorica da verificare in fase operativa = *

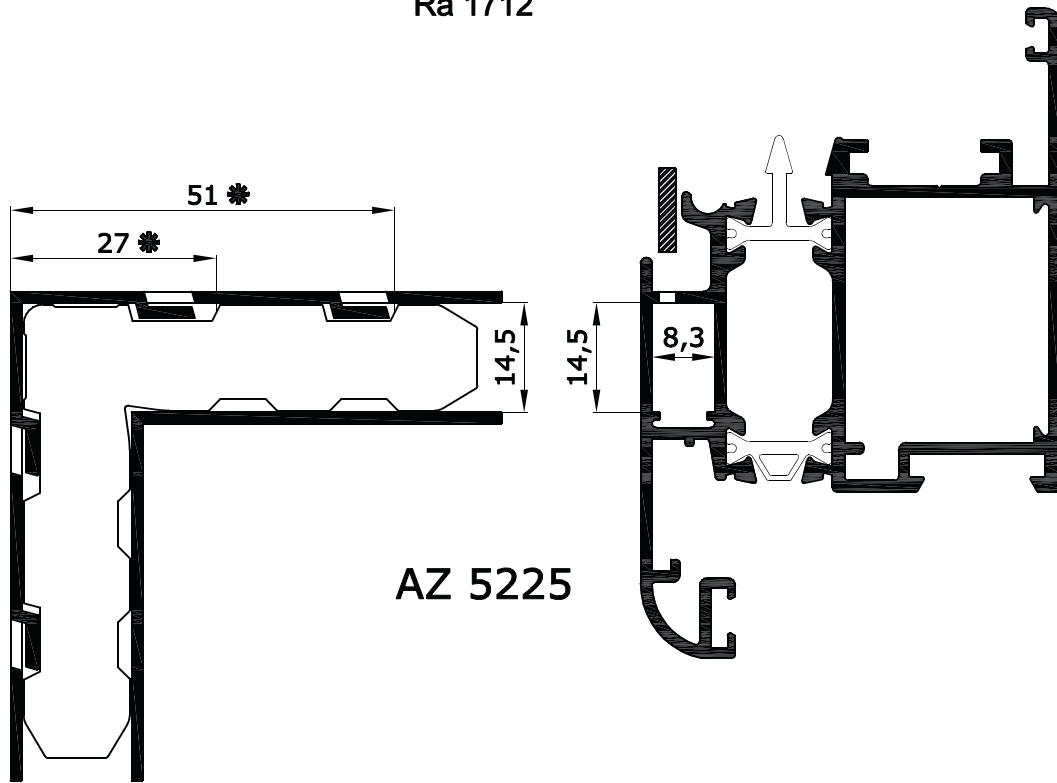
Squadretta a cianfrinare
Ra 1711



AZ 5219

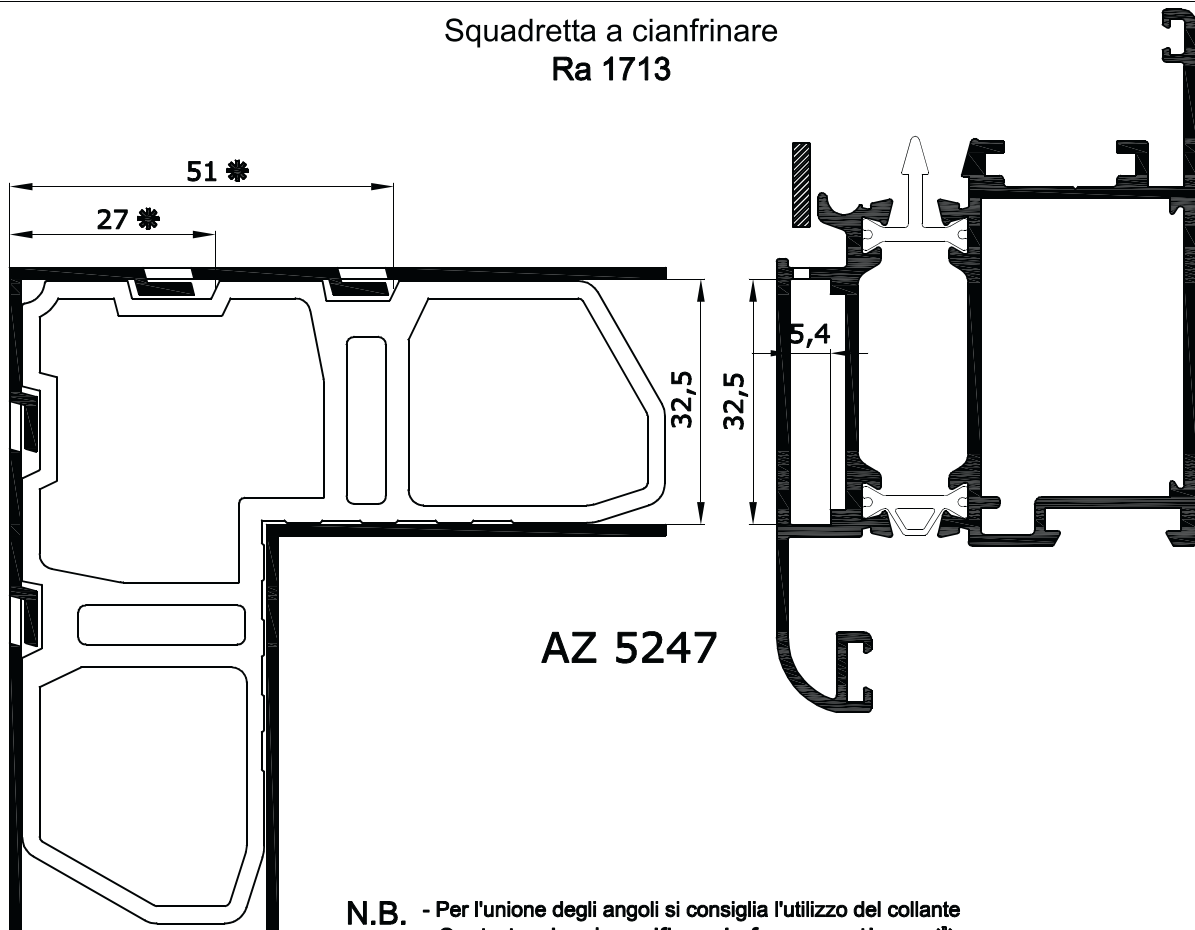
N.B. - Per l'unione degli angoli si consiglia l'utilizzo del collante
- Quota teorica da verificare in fase operativa = *

Squadretta a cianfrinare
Ra 1712



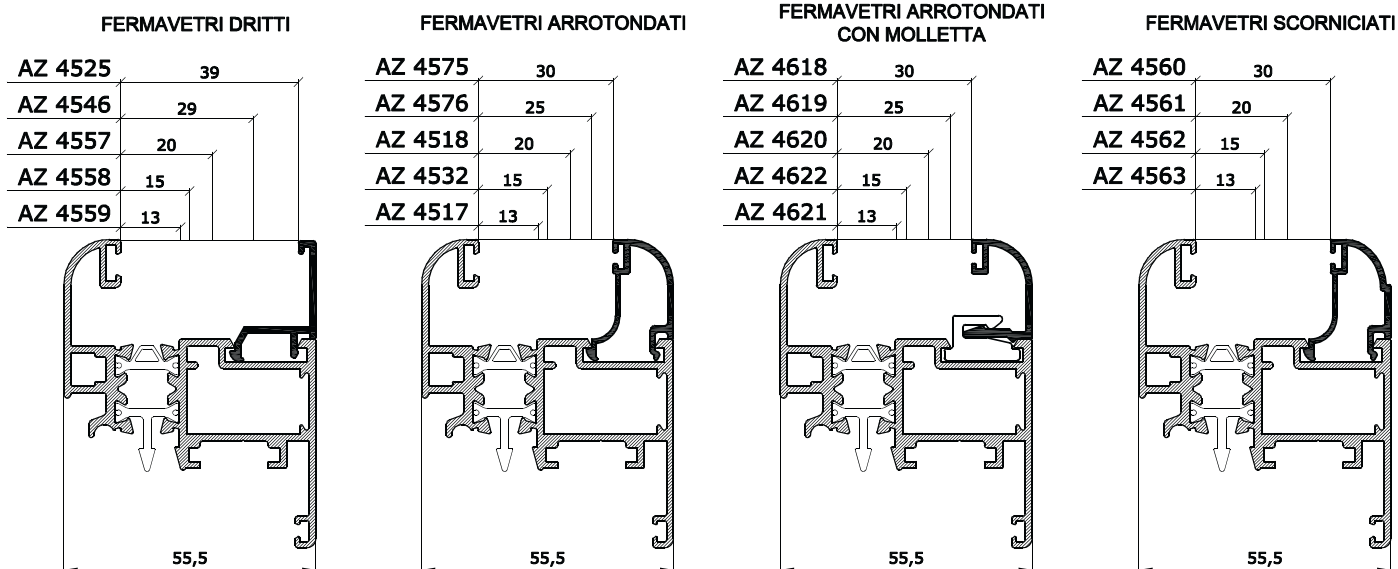
N.B. - Per l'unione degli angoli si consiglia l'utilizzo del collante
- Quota teorica da verificare in fase operativa = *

Squadretta a cianfrinare
Ra 1713



N.B. - Per l'unione degli angoli si consiglia l'utilizzo del collante
- Quota teorica da verificare in fase operativa = *

ANTE



TELAI

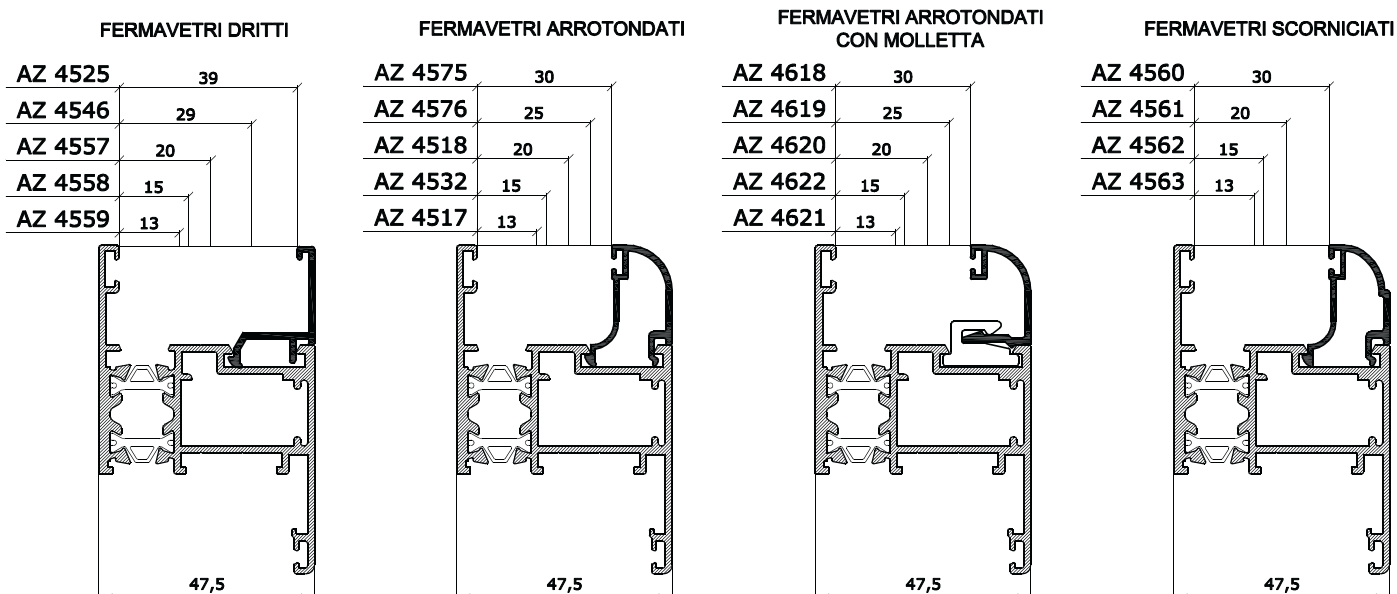







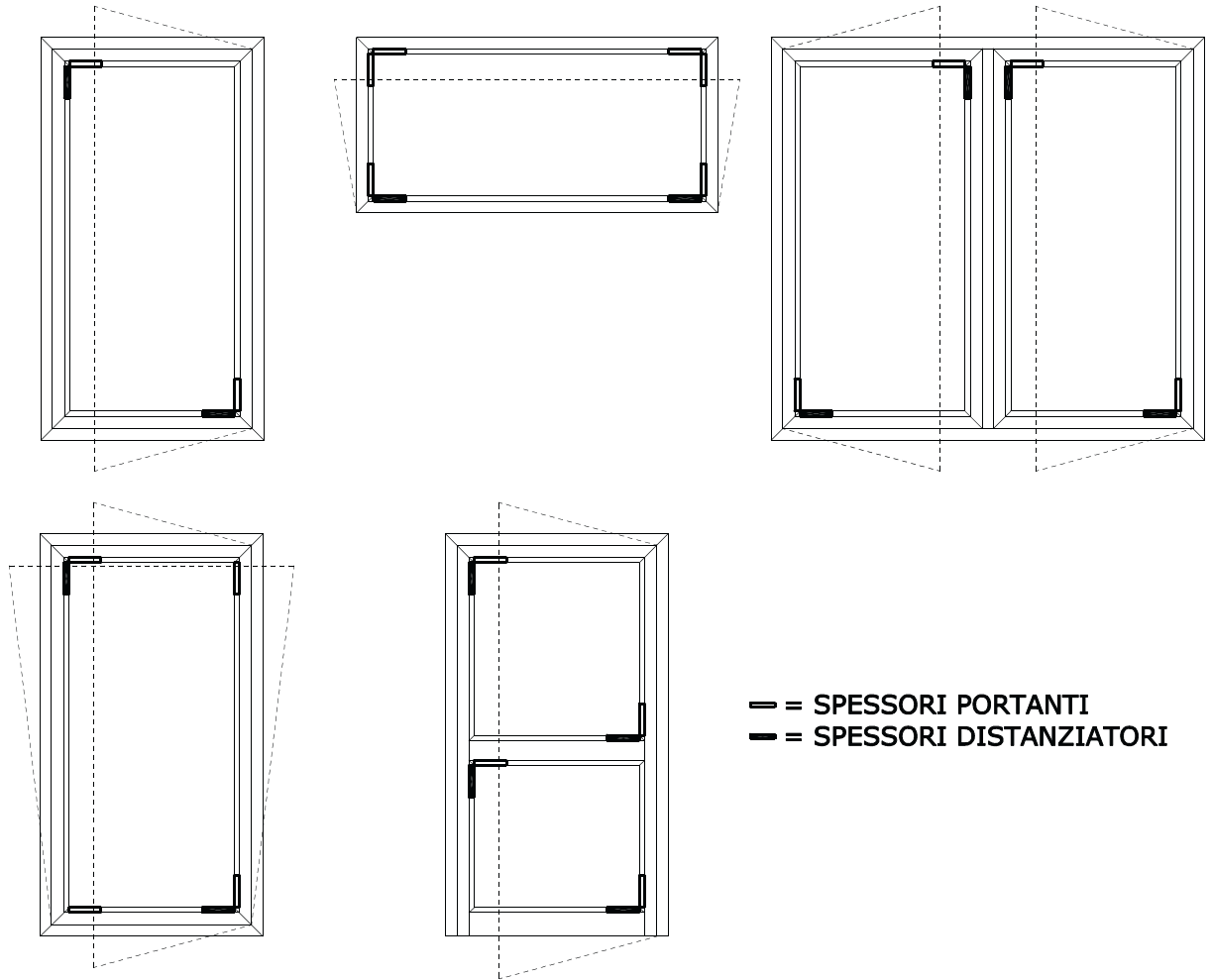


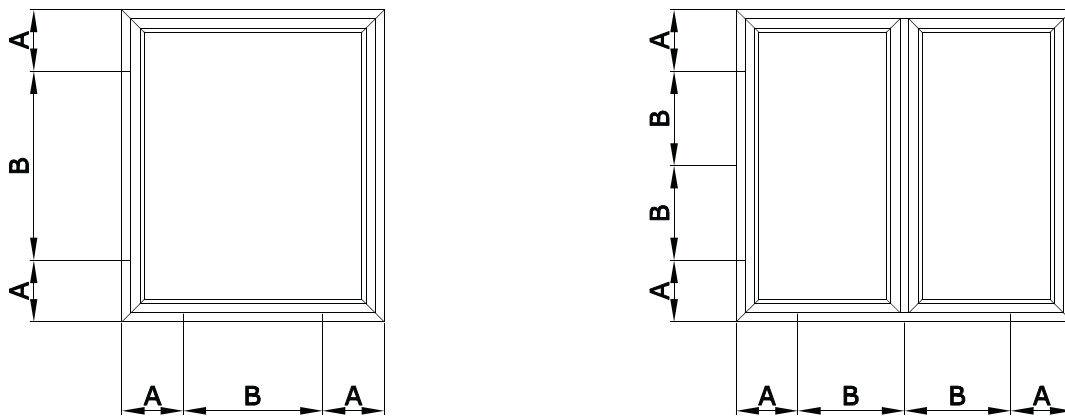
TABELLA GUARNIZIONI
(QUOTE CON GUARNIZIONI IN OPERA)

						
Rg 307 2 mm.	Rg 320 3 mm.	Rg 308 4 mm.	Rg 321 5 mm.	Rg 309 6 mm.	Rg 311 2,5 mm.	Rg 312 3,5 mm.

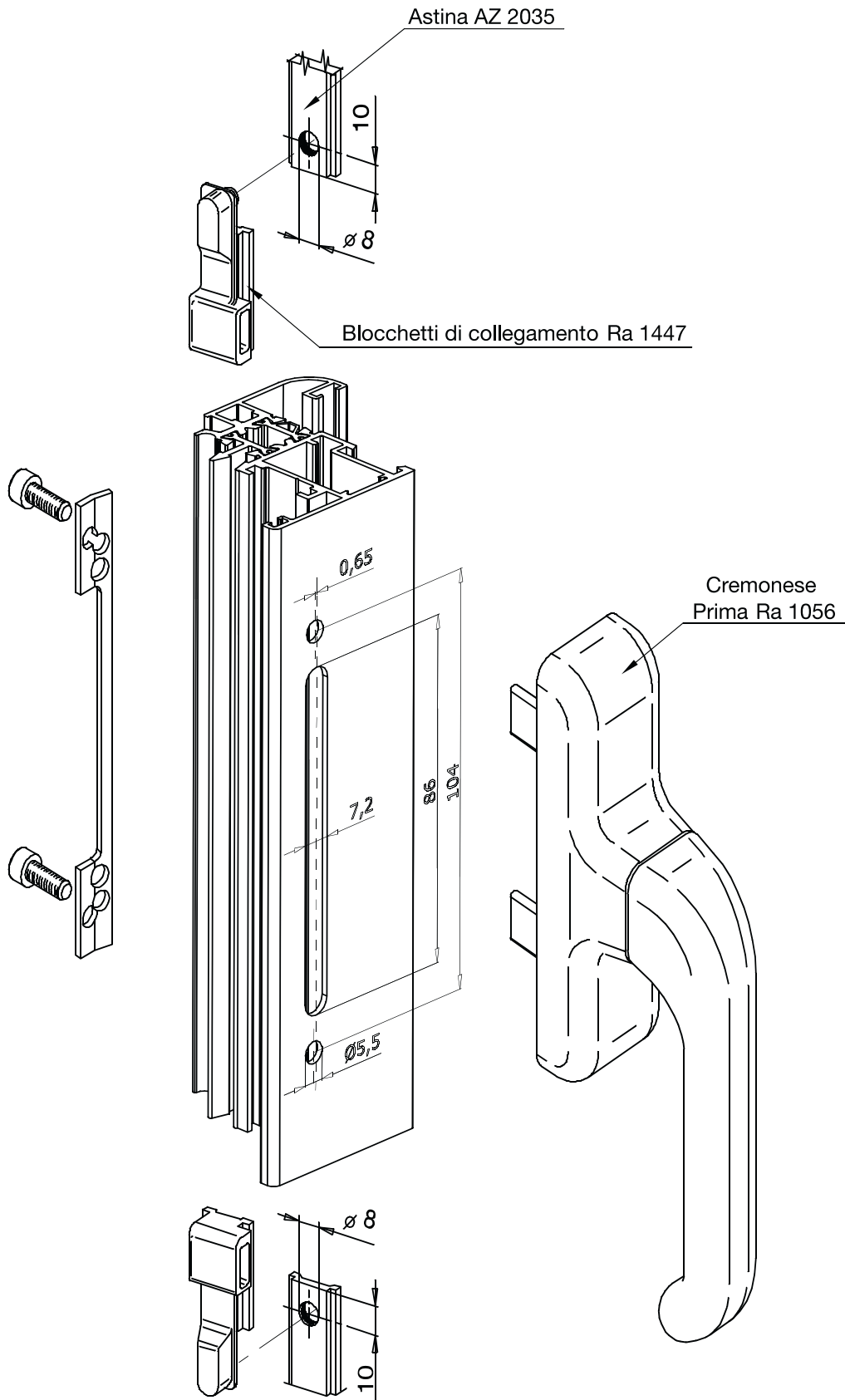
SPESSORAMENTO VETRI



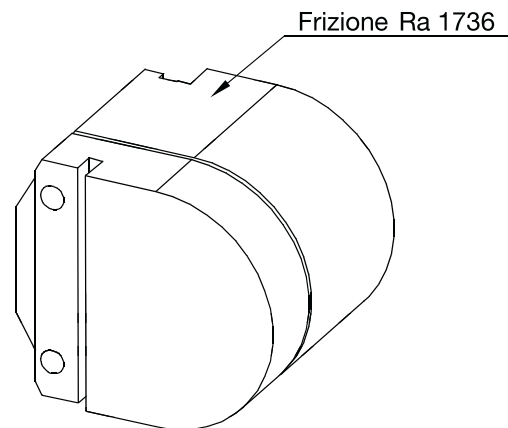
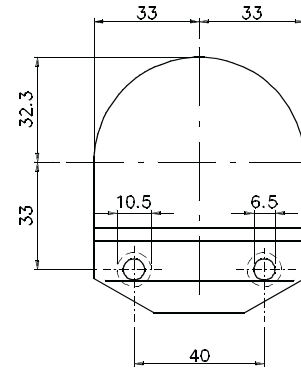
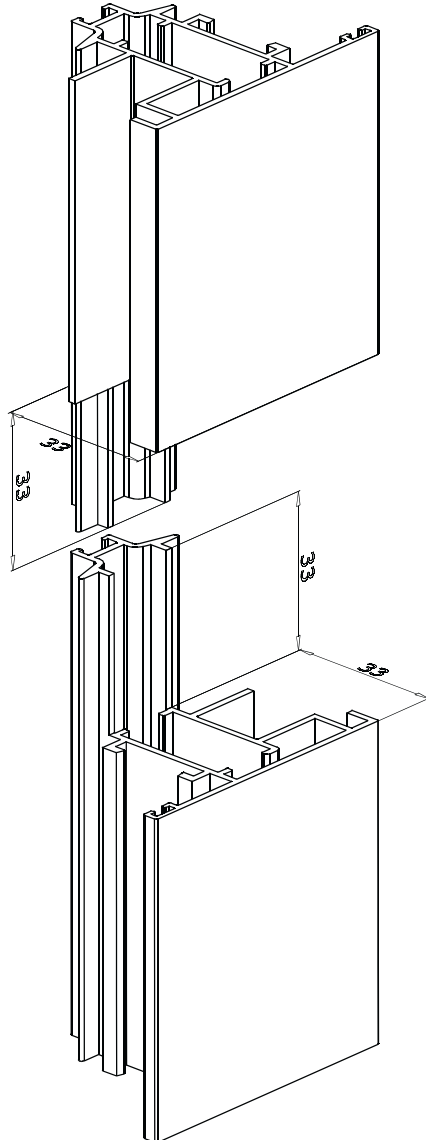
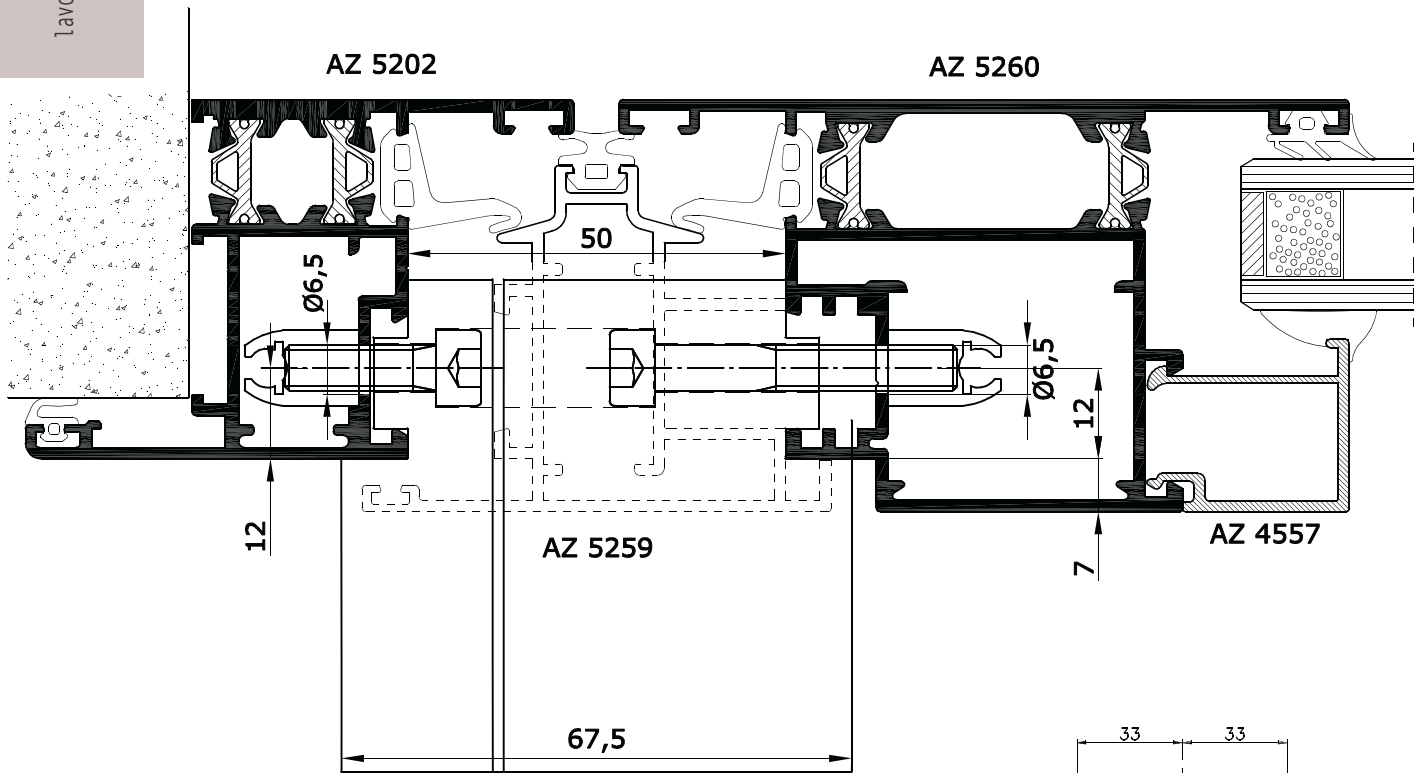
FISSAGGIO A MURO

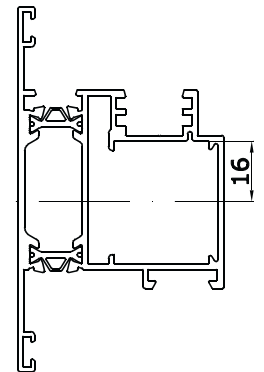
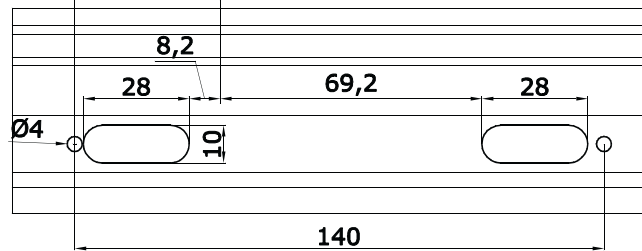
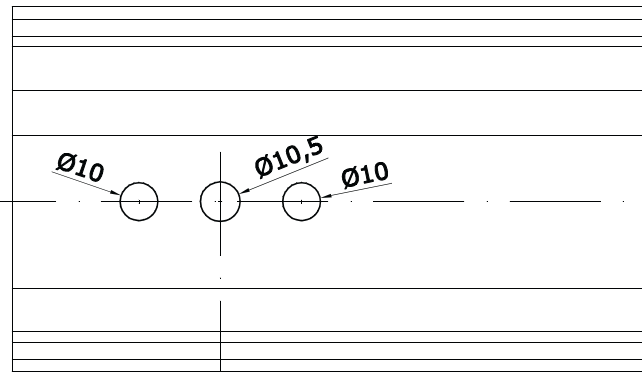
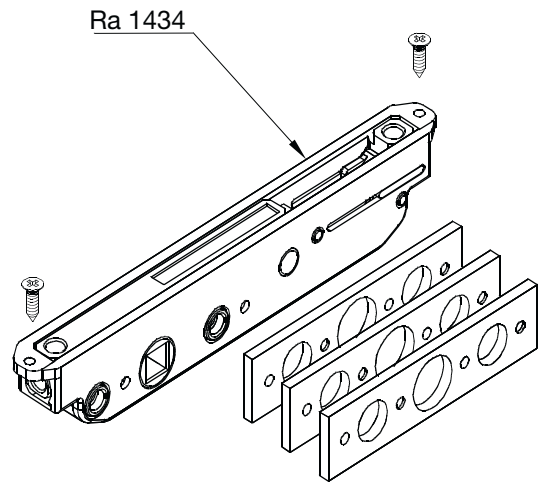
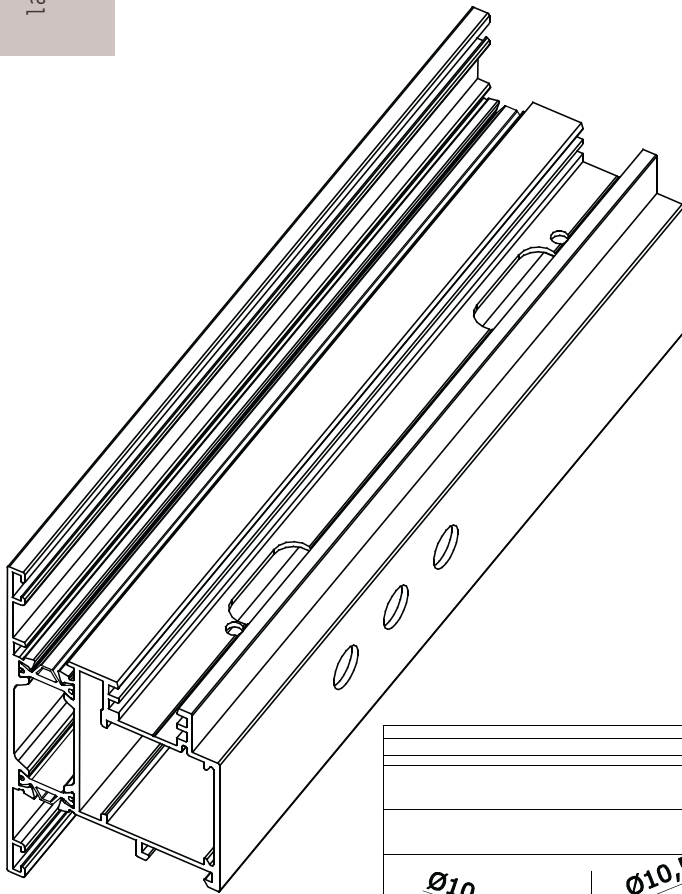


A = 100 / 150 mm.
B = 500 mm. massimo

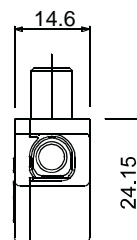
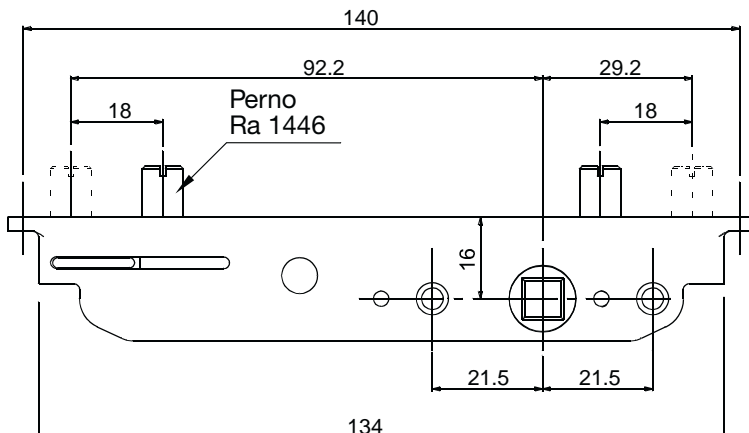


N.B.- Lavorazione eseguita con punzonatrice Ra 1074

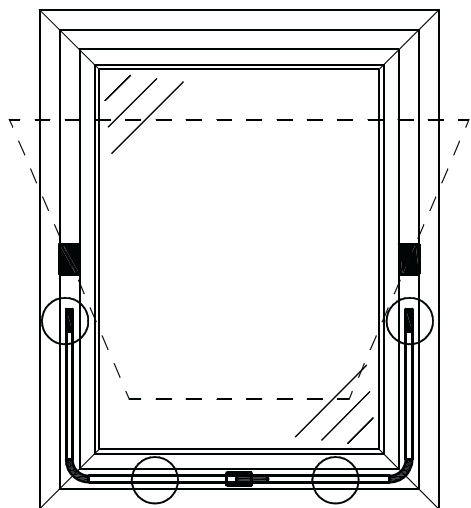








AZ 5260




Bilico verticale

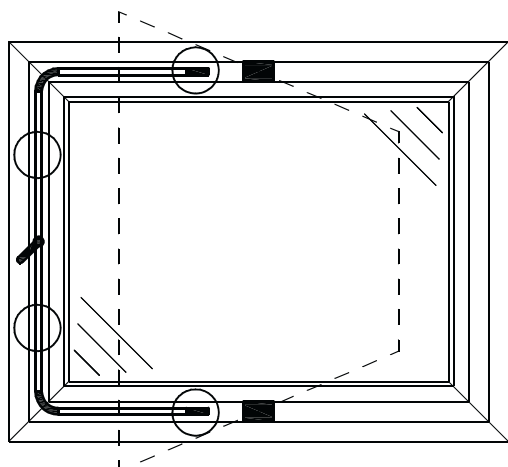






	Nottolino di chiusura Ra 2918 e incontro Ra 2907	N°4+4 pz
	Rinvio d'angolo Ra 1453 e perno di collegamento Ra 1446	N°2+2 pz
	Frizione Ra 1736 *	N°1cp
	Martellina Prima Ra 2916 e movimentazione interna Ra 1434	N°1+1 pz

*Frizione Peso MAX 75Kg
Dimensione MAX H=2000
L=1500


 Punti di chiusura

Bilico orizzontale

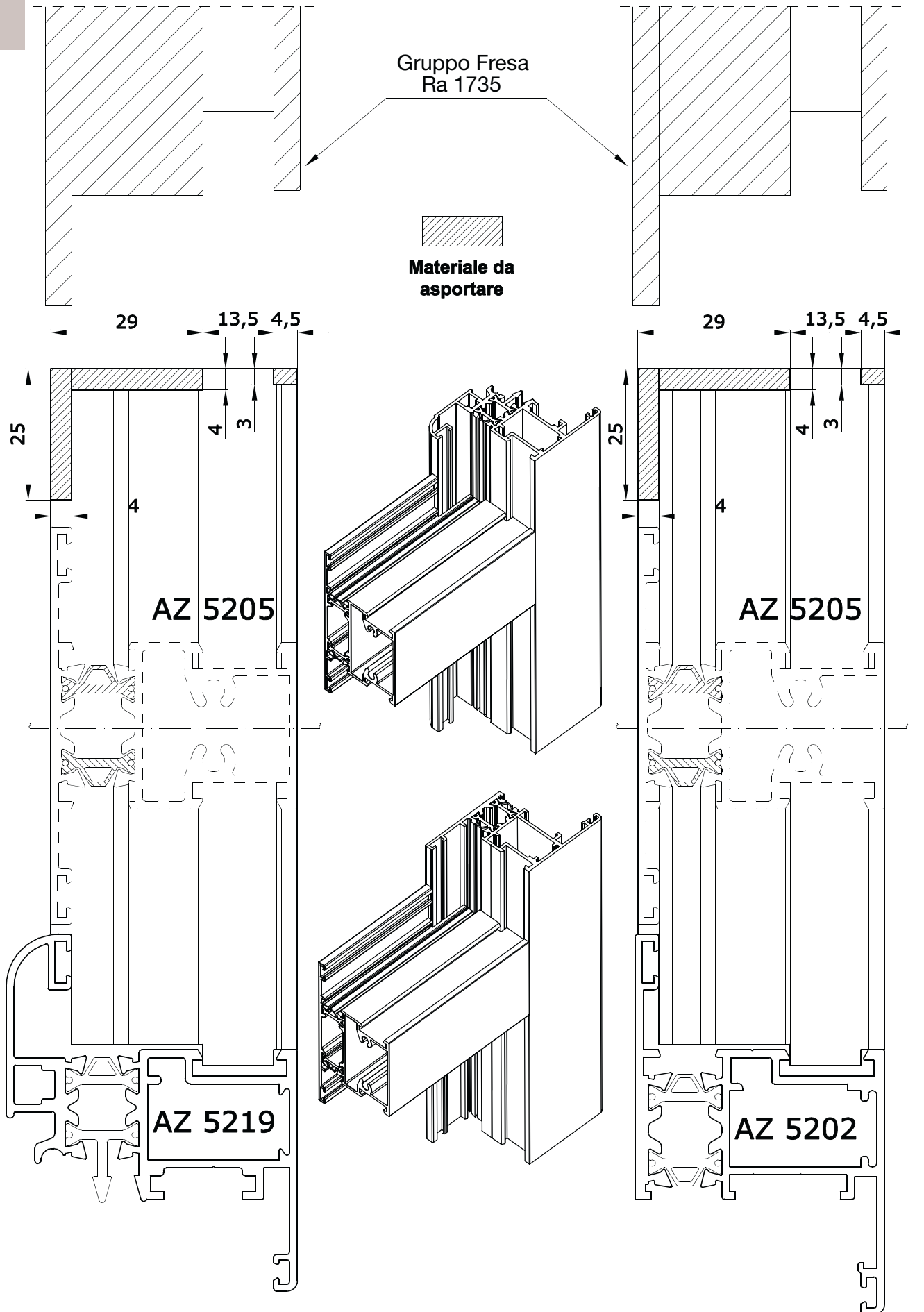


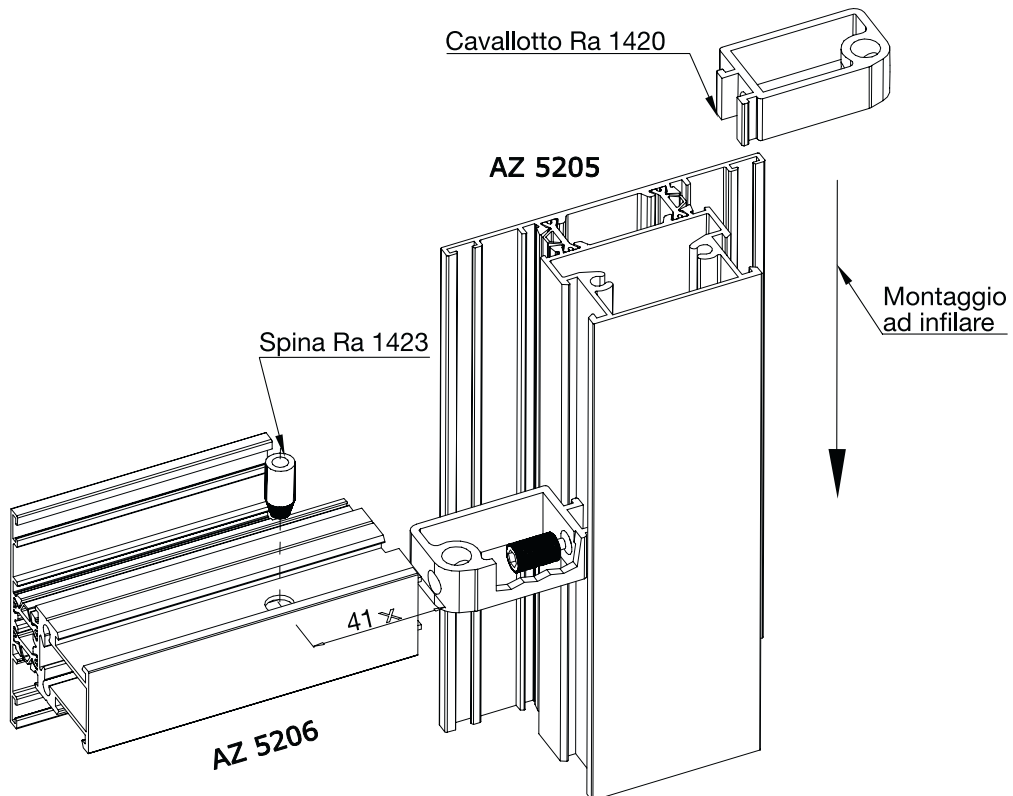
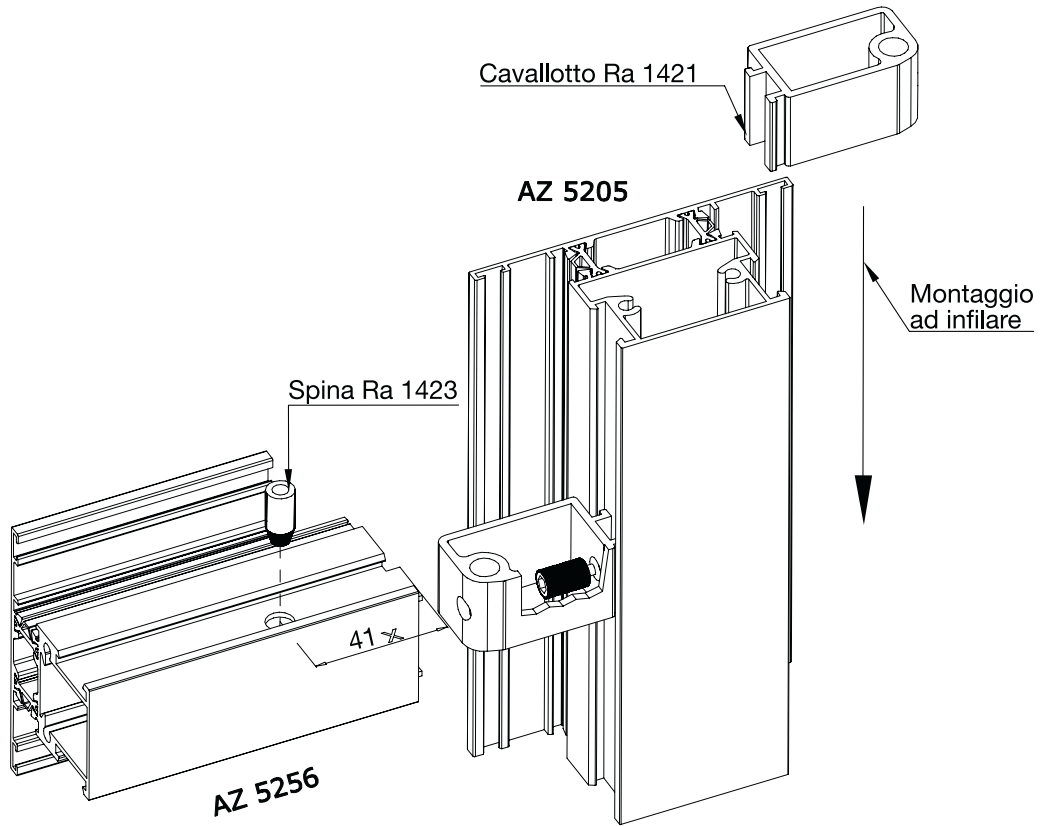
	Nottolino di chiusura Ra 2918 e incontro Ra 2907	N°4+4 pz
	Rinvio d'angolo Ra 1453 e blocchetti di collegamento Ra 1447	N°2+2 pz
	Frizione Ra 1736 *	N°1cp
	Cremonese Prima Ra 1056	N°1+1 pz

*Frizione Peso MAX 75Kg
Dimensione MAX H=2000
L=1500

 Punti di chiusura

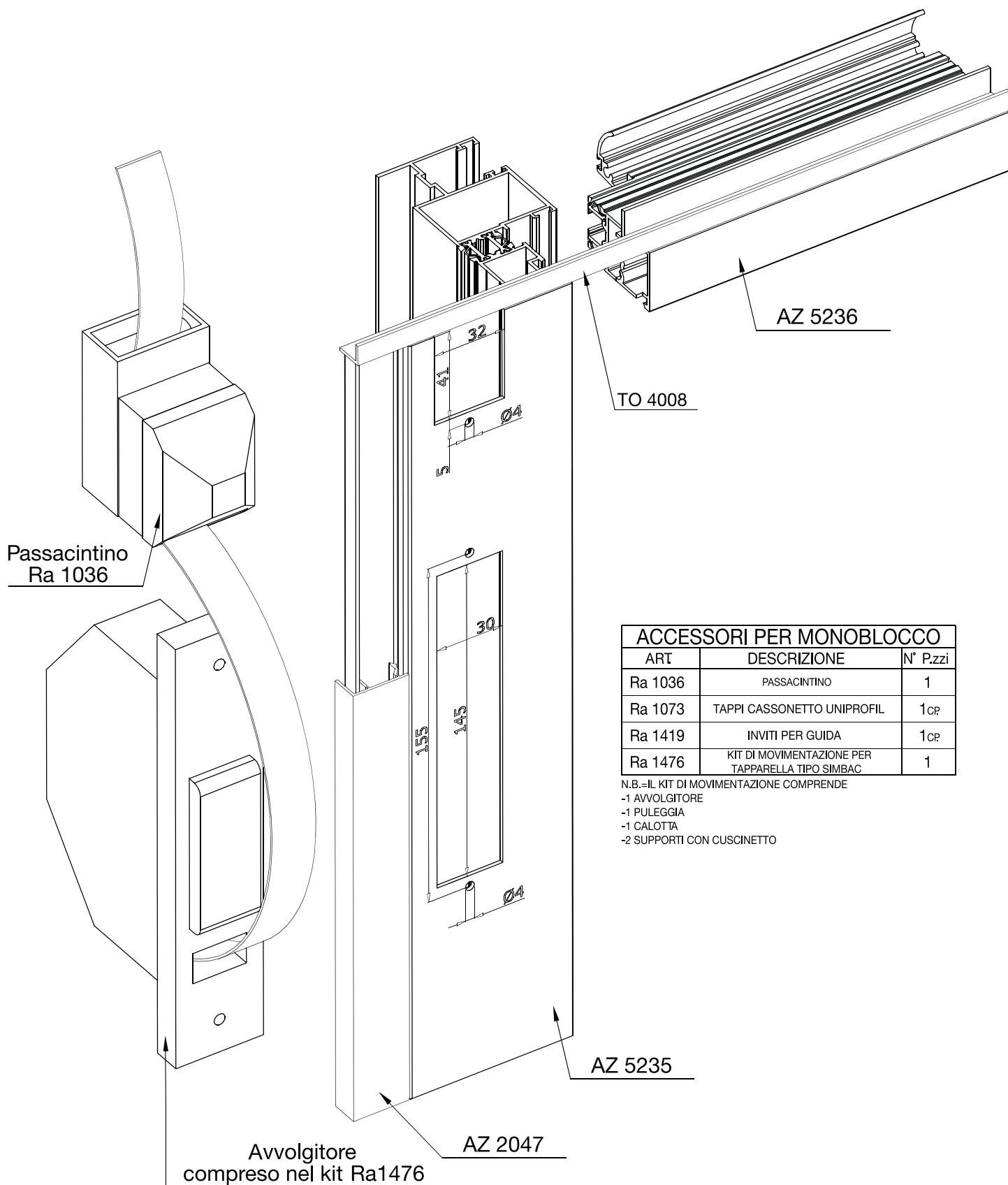
N.B. In alternativa alla chiusura con martellina è possibile utilizzare la maniglia a tavellino Ra 1439





✗ da verificare in fase di lavorazione

N.B. - Per l'unione dei traversi si consiglia l'utilizzo del collante
- Lavorazione eseguita con gruppi fresa Ra 1412

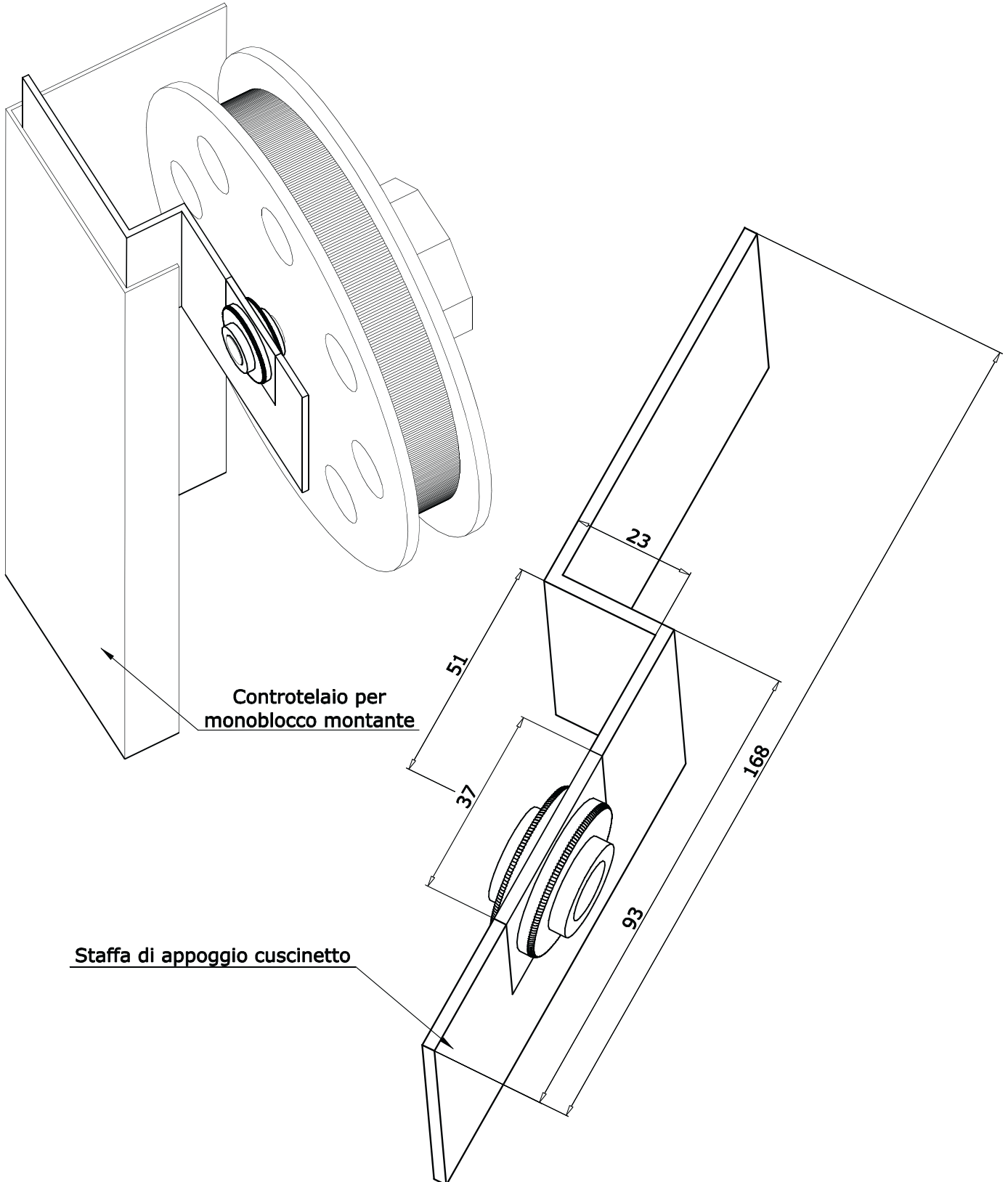


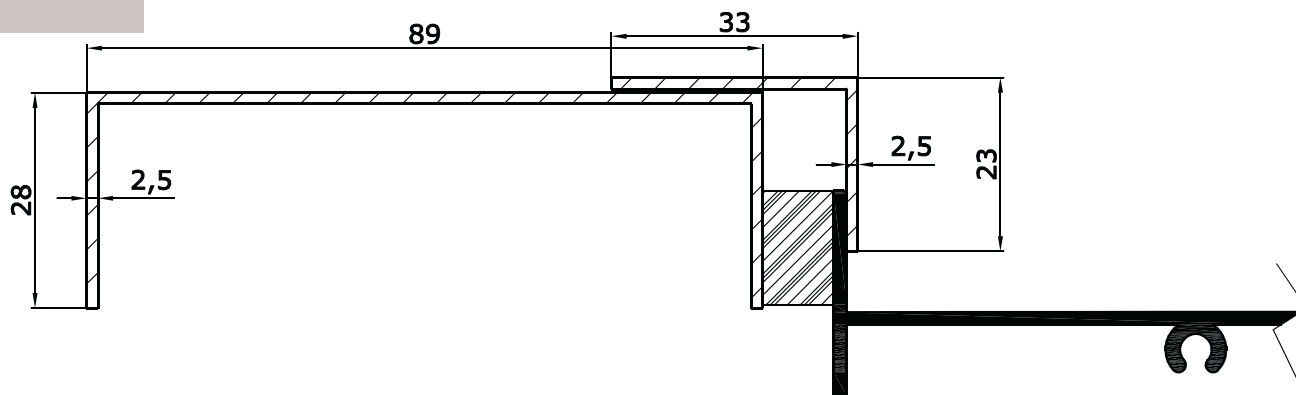
ACCESSORI PER MONOBLOCCO		
ART	DESCRIZIONE	N° P.zzi
Ra 1036	PASSACINTINO	1
Ra 1073	TAPPI CASSONETTO UNIPROFIL	1 CP
Ra 1419	INVITI PER GUIDA	1 CP
Ra 1476	KIT DI MOVIMENTAZIONE PER TAPPARELLA TIPO SIMBAC	1

N.B.=IL KIT DI MOVIMENTAZIONE COMPRENDE

- 1 AVVOLGITORE
- 1 PULEGGIA
- 1 CALOTTA
- 2 SUPPORTI CON CUSCINETTO

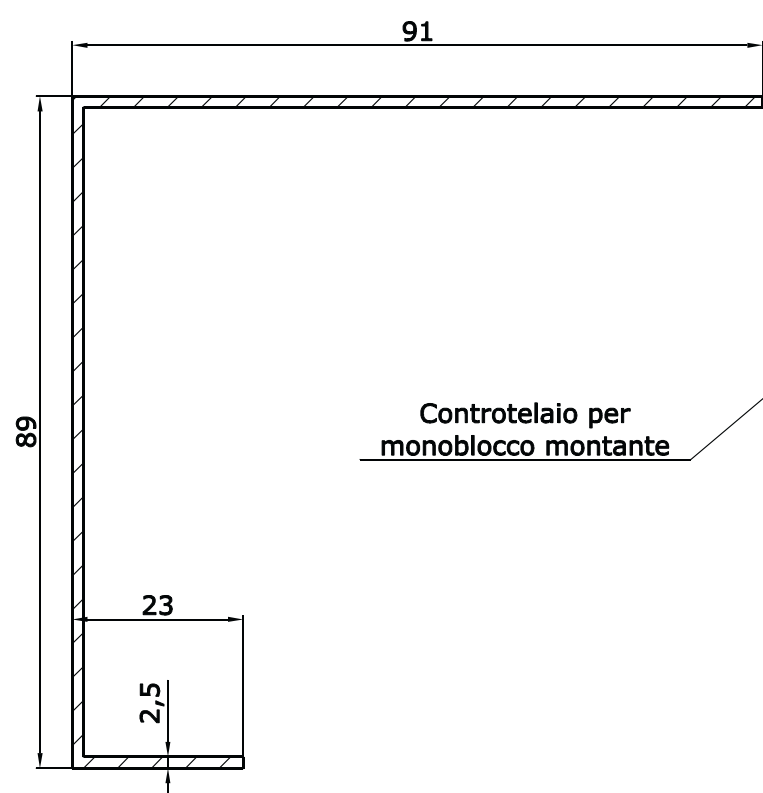
La staffa di appoggio cuscinetto va fissata sul controltelaio per monoblocco montante



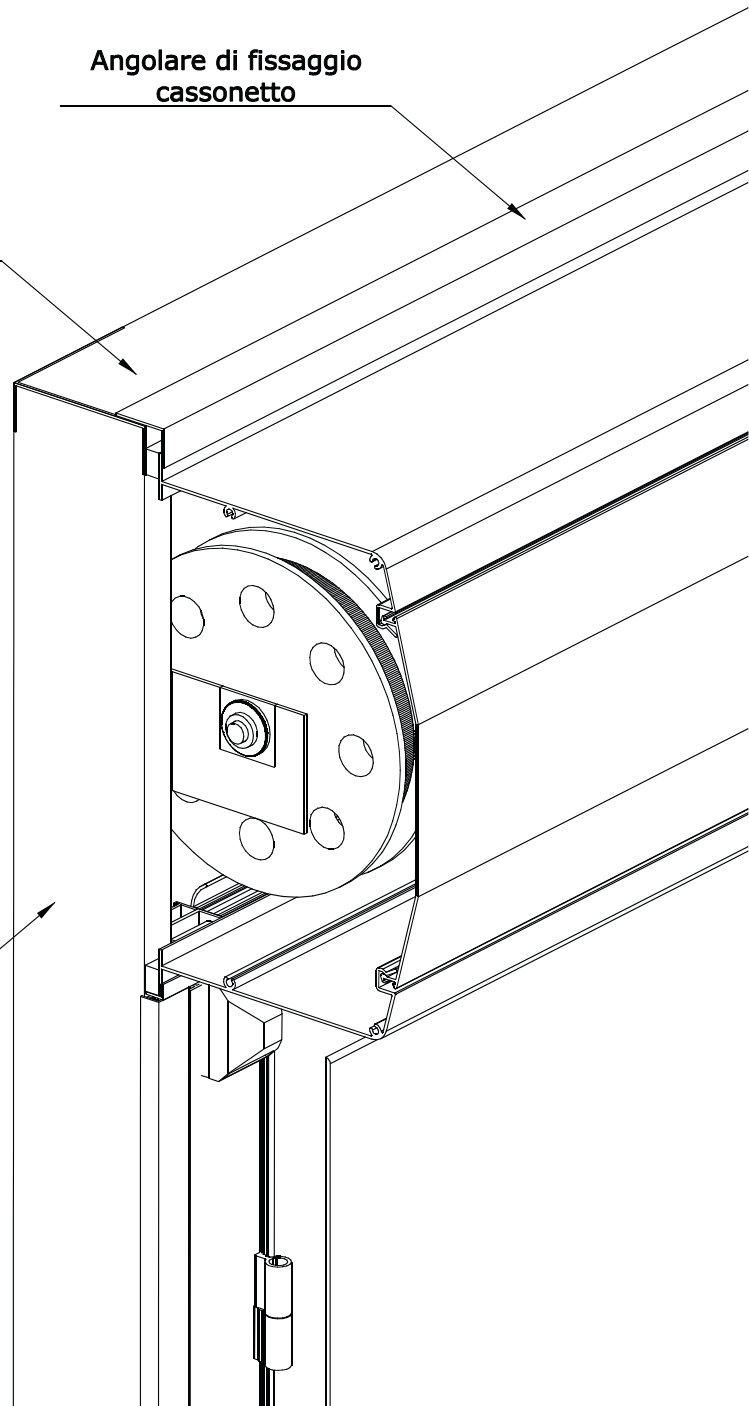


Angolare di fissaggio
cassonetto

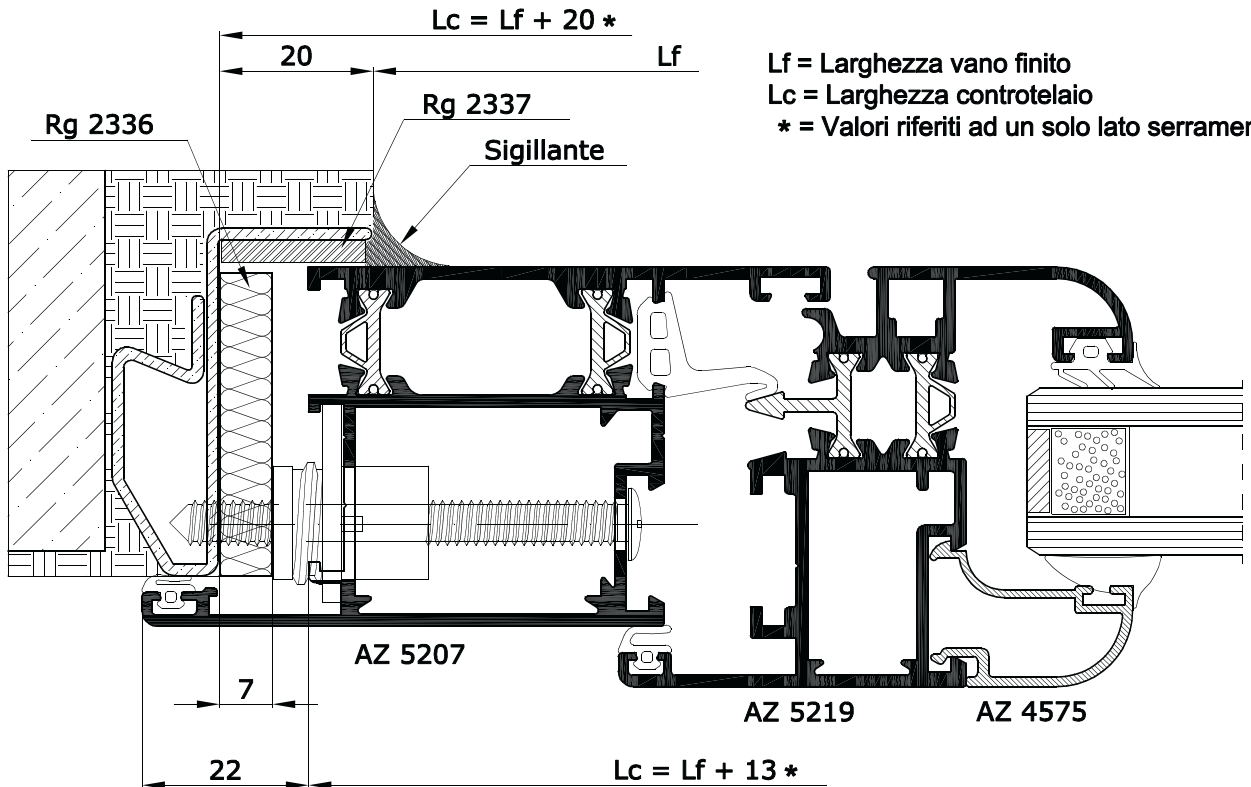
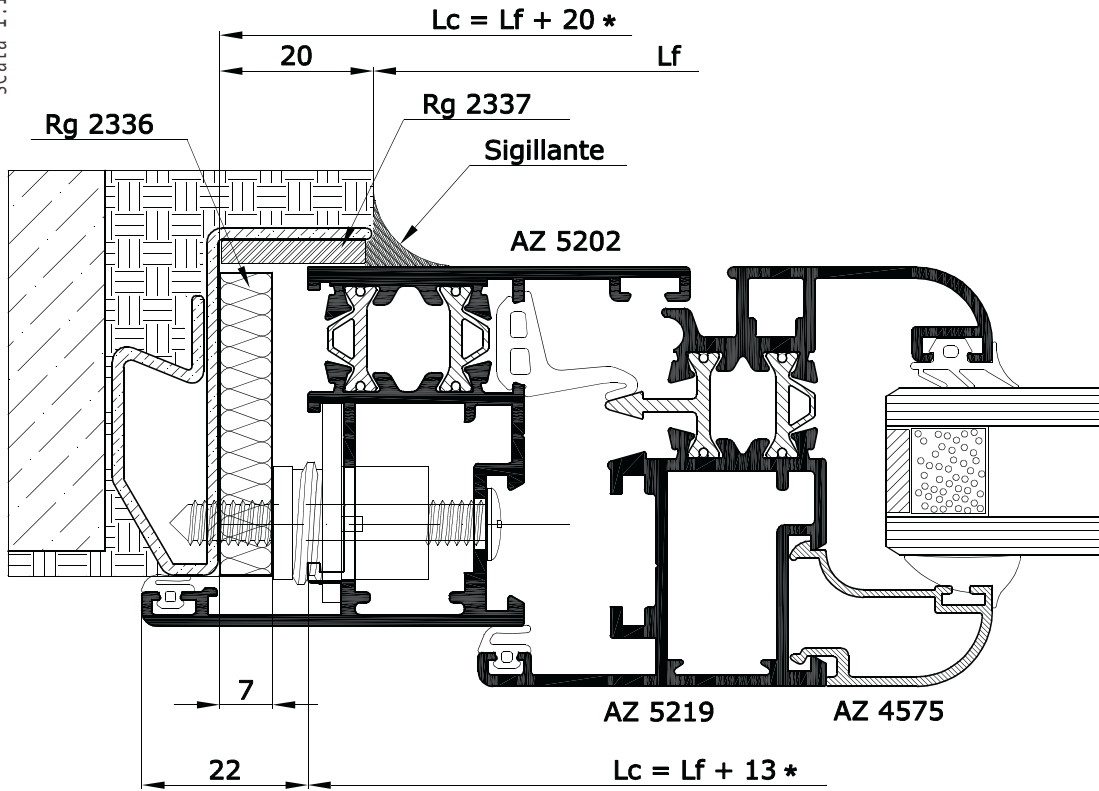
Controtelaio per
monoblocco trasverso



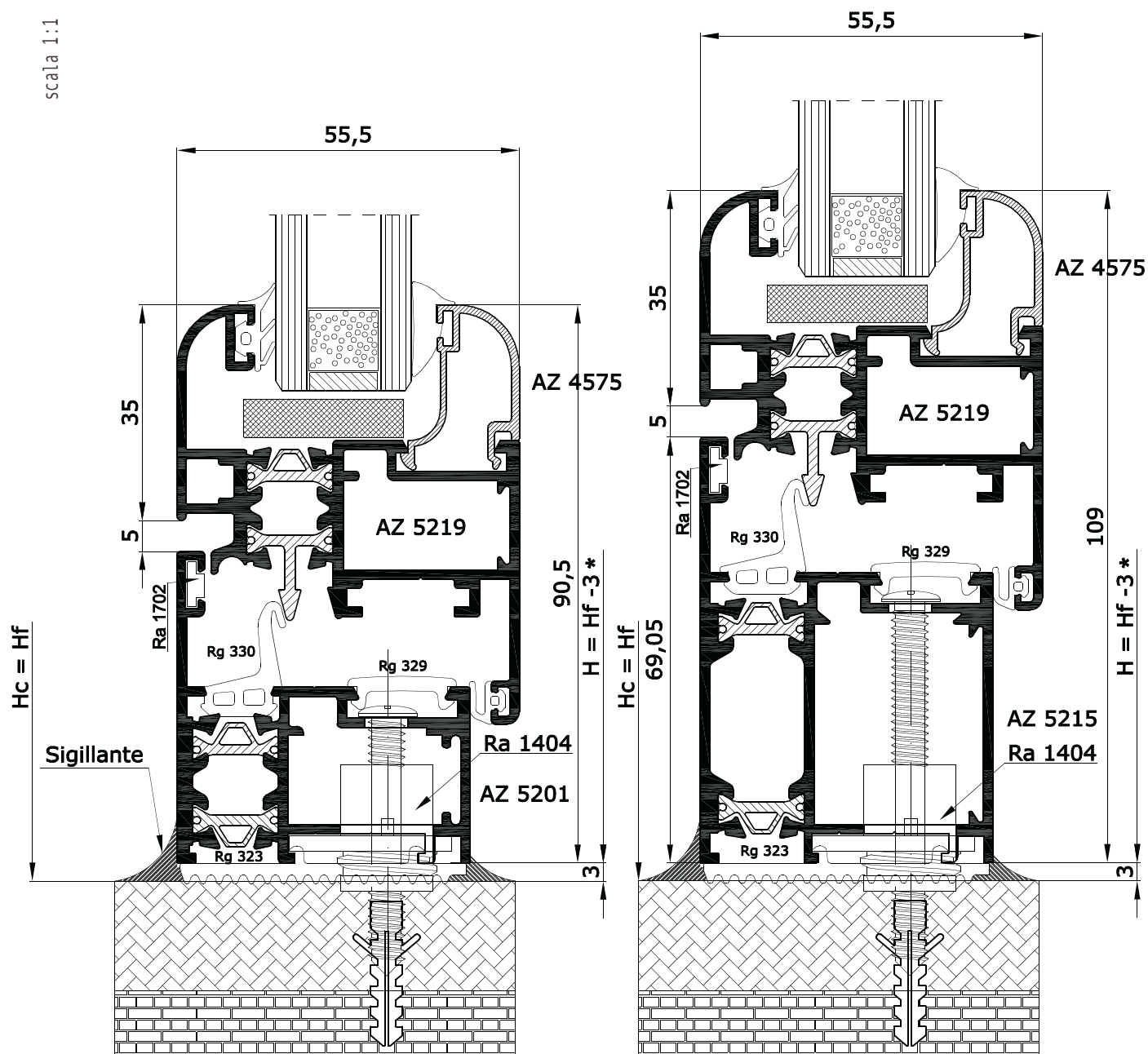
Controtelaio per
monoblocco montante



scala 1:1



scala 1:1



Hf = Altezza vano finito

Hc = Altezza controtelaio

= Valori riferiti ad un solo lato serramento